



## 15 Ton Steel

**JERR-DAN**  
RUN HARD

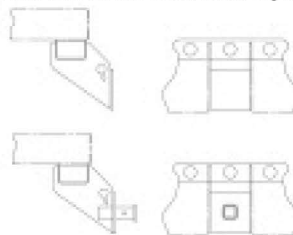
# Eastern Wrecker Sales, Inc.

### STANDARD FEATURES

- Deluxe Bolt-On Headboard with Screen
- 20,000 lb Worm Gear Winch with Remote Air Free Spool Release and 5/8" dia x 75' long cable
- W8 x 21 lb/ft Steel Main Deck Beams
- Reinforced Low-Profile Tapered Approach Tip
- Steel Mini-I Beam Crossmembers on 8" Centers
- Steel Angle Flush Style Rubrails with Stake Pockets
- Keyslots: Two at Front, Four at Rear
- Two Chain and Binder Trays Abreast of Winch
- FMVSS Light Group with Wiring Harness and Packard® Weather-Pack Connectors
- Dual Lighted Control Stations with Durable Polycarbonate Placards, Polyethylene Hoods and Polished Aluminum Handles
- Dual Hydraulic Counterbalance Locking Valve on Deck Tilt Function
- Reinforced Rigid Tubular Steel Subframe with No-Lube™ Pivot Joints\*
- Full Length Top / Sectional Bottom No-Lube™ High Performance Replaceable Slide Pad System\*\*
- Flexible Nylon Hose / Cable Carrier Tracking System
- Heavy Duty Deck Lock / Hold-Down System

- Adjustable Tilt Stabilizer Bumpers
- Backup Alarm
- Deck and Subframe Painted Black
- Mud Flaps
- Abrasion Resistant / Thermal Resistant Hydraulic Hoses
- Hydraulic Reservoir with Integrated Oil Level / Temperature Gauge
- Hydraulic Supply and Return Filtration
- Chrome Plated Cylinder Rods
- Direct Mount Pump

Stationary Reese Hitch Receiver or Pintle Hitch Mtg Plate on Subframe



4,000/15,000 lbs. 5 & 7.5 Ton  
5,000/20,000 lbs. 10 & 15 Ton

500/5,000 lbs. 5 & 7.5 Ton  
1,200/12,000 lbs. 10 & 15 Ton

### EQUIPMENT OPTIONS



Rear Air Hookup at Tail Light  
(Hose Not Included)



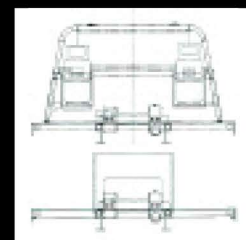
7-Way Plug with Adapter / 7-Round to 4-Flat and 7-Round to 6-Round  
(Standard with 10 and 15 Ton Tow Options)



Wireless Remote for Optional Winch/Buzz Box Holder  
(Buzzer Goes Off When Out of Holder)



8' Wheel Wells with Optional Covers



Half Forklift Guard with Propane Tanks

SEE PAGES 7-10 FOR COMPARISON CHARTS OF STANDARD FEATURES AND EQUIPMENT OPTIONS

Eastern Wrecker Sales, Inc

www.easternwrecker.com - 919-553-4038