



HPL 6000 Aluminum Body Cougar Light Duty Wrecker

JERR-DAN[®]

TOWING & RECOVERY TECHNOLOGIES



Eastern Wrecker Sales, Inc.

Some Equipment Shown May Be Optional



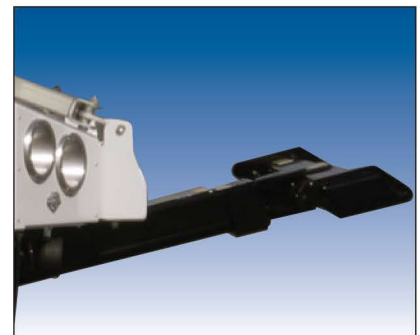
Now Available with
Optional BAT-TOW
Storage Compartment.



The Aluminum Modular Construction Wrecker Body is Designed to Provide Years of Trouble Free and Corrosion Free Service.



Jerr-Dan's Exclusive Self-Contained Recovery Boom is Hydraulically Actuated for Raise, Lower and Extend Functions.



Versatility and Flexibility Characterize the 6-Function Hydraulically Powered Jerr-Dan Underlift.



HPL 6000

Aluminum Body Cougar Light Duty Wrecker

SPECIFICATIONS

Underlift	<ul style="list-style-type: none"> Lifting Capacity (Extended)* "L" Arms 5,000 lb. Opt. Frame Forks 6,000 lb. "L" Arm Storage Brackets STD Wheel Lift Tie-Down Straps STD Hydraulic Tilt- Up 12° Hydraulic Tilt- Down 9° Distance from Tailboard to Pivot Crosstube Extended 69" Retracted 33" 1 Pr. Spring Hanger Forks STD Two Sets of Frame Forks STD Two Sets of Fork Receivers STD 	Body	<ul style="list-style-type: none"> Rugged Modular Aluminum Construction STD Polished Aluminum Rubrails STD Aluminum Diamond Decking STD Stainless Steel Hardware and Body Fasteners STD FMVSS Lighting STD Lighted Driver's Side Toolbox STD Tow Sling Mounting Brackets STD Mud Flaps STD
	<ul style="list-style-type: none"> Dual Manual Wheel Lift Controls STD Six Function Hydraulic Wheel Lift Up/Down, In/Out, Tilt Up/Down STD 		<ul style="list-style-type: none"> Hydraulic System Direct Mount Pump STD 2 Gear Cable Shift PTO w/ Warning Light STD Two Magnetic Drain Plugs in Hydraulic Tank to Protect Hydraulic System STD

Eastern Wrecker Sales, Inc.

OPTIONAL EQUIPMENT

Recovery Booms & Winches	<ul style="list-style-type: none"> Wide Variety of Hydraulically Powered Recovery Booms Boom Ratings* Retracted: 8,000 - 24,000 lbs. Extended: 2,500 - 8,000 lbs. Boom Reach Retracted: 90" Extended: 150" Boom Working Angles Maximum: Up to 60° Minimum: 0° Boom Mounted Worm Gear Winches, Single & Dual Configurations Available Capacities; 8,000 - 12,000 lbs. West Coast Single & Dual Line Winch Packages Deck Mounted Recovery Winch, 8,000 lb. Capacity Cable Tensioner Plate for Winch Remote Free Spool Handles 	Lighting	<ul style="list-style-type: none"> Wrecker Special Light Package Fold Down Aluminum Light Bar Three Function Switch Panel Rubber Work Lights (pr) Magnetic Tow Light Kit
	<ul style="list-style-type: none"> Passenger Side Toolbox 24" Aluminum Tunnel Toolbox 48" Aluminum Tunnel Toolbox Full Height Aluminum Headboard Chrome Bed Rails Fiberglass Fender Flares BAT-TOW Storage Compartment 		<ul style="list-style-type: none"> Pivoting Wheel Grid Tow Sling Medium Duty Truck Hitch Collins Self Loading Dolly Fork Holders Frame Forks Spring Hanger Forks
Body		Controls	<ul style="list-style-type: none"> Jump Start Kit Remote Control for Underlift
		Other	<ul style="list-style-type: none"> Back-Up Alarm Steel Push Bumper w/ Grille Guard Scotch Blocks w/ Mounting Brackets

RECOMMENDED CHASSIS REQUIREMENTS

Minimum GVW Rating 15,000 lbs.	Minimum Cab-to-Axle, CA 84"
--------------------------------------	-----------------------------------

*All ratings comply with SAE J2512 Recommended Practice

***The Tow Rating of your Recovery Equipment is limited to the actual GVWR (Gross Vehicle Weight) Rating of your Recovery Vehicle. For Example, the GVWR of your Recovery Vehicle should not be exceeded by the GCW (Gross Combined Weight) of both Towing and Towed Vehicles. This is the Actual Weight of the Towing Vehicle plus the Towed Vehicle(s) including payload, driver, passenger(s), and fuel. (Everything that moves with your equipment)

Important Notice: All outside Frame Rails extending behind the cab of the chassis must be free of all Air Tanks Battery Boxes, Fuel Tanks, Etc.

Patents: 5,782,596 & 5,839,775

The load-carrying capacity of any truck is determined by the GVWR of the cab chassis. It is important that you determine that your truck has satisfactory carrying capacity and axle ratings for your specific application. Jerr-Dan's® authorized sales representatives are available to assist you in this regard. Specifications subject to change without prior notification.

Eastern Wrecker Sales, Inc

www.easternwrecker.com - 919-553-4038