

SPEC SHEET

FEATURES

- Load angles as low as 10.0 degrees
- Lowest maintenance carrier in the world, including No-Lube™ technology for slide pads and pivot joints
- Strongest aluminum bed in the industry featuring exclusive and patented Galvanized Steel Beam Technology™
- On-board hydraulic pressure gauge allows for enhanced troubleshooting
- Single sheet decking on steel deck reduces weld joints & potential corrosion points
- Low-profile winch cable/tensioner plate
- Lower manual and air upper winch free-spool
- Corrosion-resistant lighted dual control stations
- Most advanced, high performance hose / wire cable-tracking system in the industry
- Highest standard DOT reflectivity and lighting levels in the industry
- Versatile tie-down locations
- Maximum legal payload capacity in its class (up to 1000 lbs. more than competitors)
- V-Chain with Cluster Hooks
- Tie-Down Chain & Strap Package

CHASSIS

- Minimum RBM (Resisting Bending Moment)
 - 2,000,000 in.-lbs.
 - (1,000,000 in.-lbs. per frame rail)
- Usable CA (Cable to Axle Centerline)
 - 208" - 214" CA (186"-192" CT) (28' deck)
 - 232" - 238" CA (210" - 216" CT) (30' deck)
- Optimal Load Angle Frame Height
 - 34"-41"
- Minimum GVWR (Gross Vehicle Weight Rating)
 - 33,000 lbs. (20,000 rear, 12,000 front)
- Currently available for: Kenworth, Peterbilt, Ford, Freightliner, Navistar, Hino
(contact sales for specific model information)

ACCESSORIES

- Exclusive R.A.I.L.™ System (Rear Awareness Indicator Lights)*
- Wireless remote with exclusive ARM™ (Actuated Remote Mechanism) system standard on all winches
- LED work lights package standard
- 36", 48", 60" & 78" toolboxes, storage trays and baskets
- Automatic throttle-up on-demand (subject to chassis configuration)
- Galvanized subframe and wheel lift components
- Various other towing and storage options

DECK

- Length
 - 28', 30' Lower
 - 14' Upper
- Capacity
 - 20,000 lbs.
 - 15,000 Lower/5,000 Upper
- Width
 - 96"
- Style
 - Aluminum (Lower & Upper)
 - Extruded 6061-T6 decking
 - Fixed blade side rails
 - Steel (Lower)
 - 3/16" diamond or smooth decking
 - Removable blade side rails
- Winch (worm gear)
 - 8,000 lbs. (all locations)

WHEEL LIFT

- Lift Capacity
 - 3,000 lbs. or 5,000 lbs.
- Tow Capacity
 - 7,500 lbs. or 12,000 lbs.
- Maximum Extended Reach
 - 58"
- Ground Approach Angle
 - 4°

THE 3&4 CAR CARRIER



A 3&4 CAR CARRIER THAT CAN GO THE EXTRA MILE

You always get more than you bargained for with a Jerr-Dan®, like a 3-Car Carrier that can actually haul 4 cars. Multiple key slots combined with an optional Wheel Lift System allow you to transport 3 cars on the bed and tow an additional car in back. And removable aluminum side rails make it easier to load disabled vehicles with a fork-truck. Best of all, it's a Jerr-Dan—so it's built to carry more than its fair share, job after job and mile after mile.

Eastern Wrecker Sales, Inc
www.easternwrecker.com - 919-553-4038

An Oshkosh Corporation Company. The Jerr-Dan name and Jerr-Dan logo are registered trademarks of Oshkosh Corporation, ©2014 Jerr-Dan Corporation.

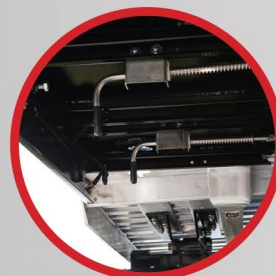
* Optional Wheel Lift System allows you to transport up to 4 cars



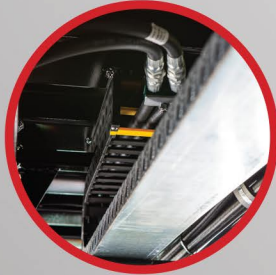
LOW PROFILE WINCH SYSTEM ALLOWS FLAT ALIGNMENT OF UPPER AND LOWER DECK



3-RUNG FOLD AWAY STEP LADDER ON THE FRONT STRUCTURE



DUAL REMOTE WINCH RELEASE MOUNTED UNDER-DECK FOR CONVENIENT OPERATION WHILE LOADING AND UNLOADING



DUAL HOSE TRACKING SYSTEM

IT CARRIES ITS WEIGHT AND THEN SOME

3-CAR CARRIER VERSATILITY

Removable aluminum side rails (steel bed) make it easier to load and unload disabled vehicles. And multiple key slots combined with an optional Wheel Lift System allow you to transport up to 4 cars.

3-CAR CARRIER EFFICIENCY

Save time and avoid damage with an efficient load/unload angle, upper-deck cut-outs and a three-rung step ladder that allows for easy access to upper-deck hold-down straps; so loading the vehicle on the upper deck will be easier, safer, and more efficient.

3-CAR CARRIER DURABILITY

A strong, lightweight upper deck and high-strength steel lower deck are built for a long working life, and Jerr-Dan's exclusive No-Lube™ technology reduces maintenance, saving time and money.



14' (168") ALUMINUM UPPER DECK

UPPER DECK WINCH (NOT VISIBLE)

INTEGRATED HEADBOARD WITH UPPER DECK

MAIN DECK WINCH (NOT VISIBLE)

LOW WEIGHT, HIGH STRENGTH, 28' (338") STEEL DECK

OPTIONAL WHEEL LIFT SYSTEM

REMOVABLE SIDE RAILS

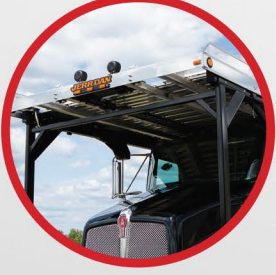
DUAL SIDE CONTROLS



UPPER DECK WINCH, LIGHTS, D-RINGS WITH KEYSLOTS (STANDARD)



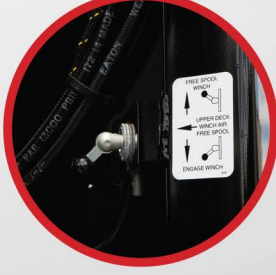
EFFICIENT LOAD/UNLOAD ANGLE AND VEHICLE ACCESS



ALUMINUM UPPER DECK IS STRONG, DURABLE AND LIGHTWEIGHT



KEY SLOTS (STRAIGHT "T", "X" AND ANGLED "T")



UPPER DECK WINCH AIR FREE SPOOL (STANDARD)



WHEEL LIFT SYSTEM (OPTIONAL)

* Some equipment shown may be optional