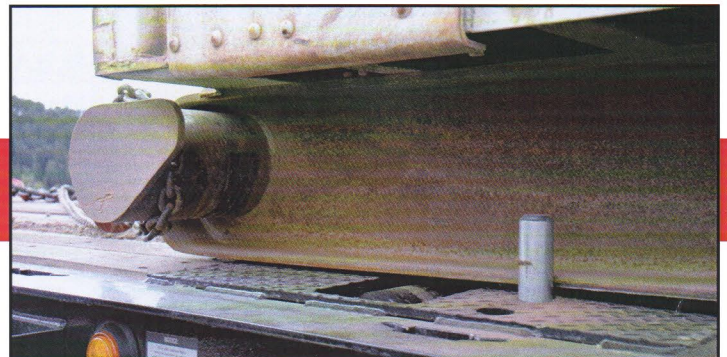
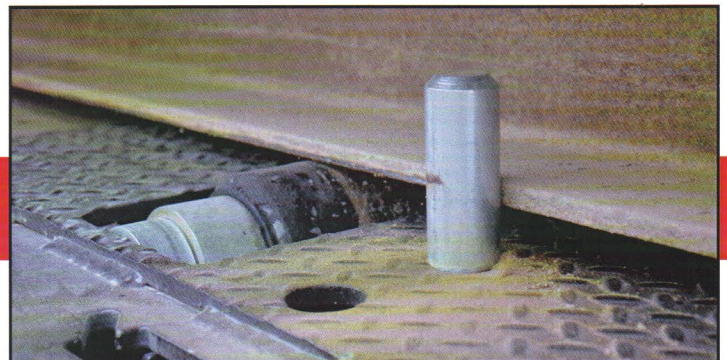


# **MODEL 455 KICKER ROLLER**



**EASY LOADING & TRANSPORTING**  
*with Landoll Traveling Axle Trailers!*



**Proven Solutions for Your Hauling Needs!**

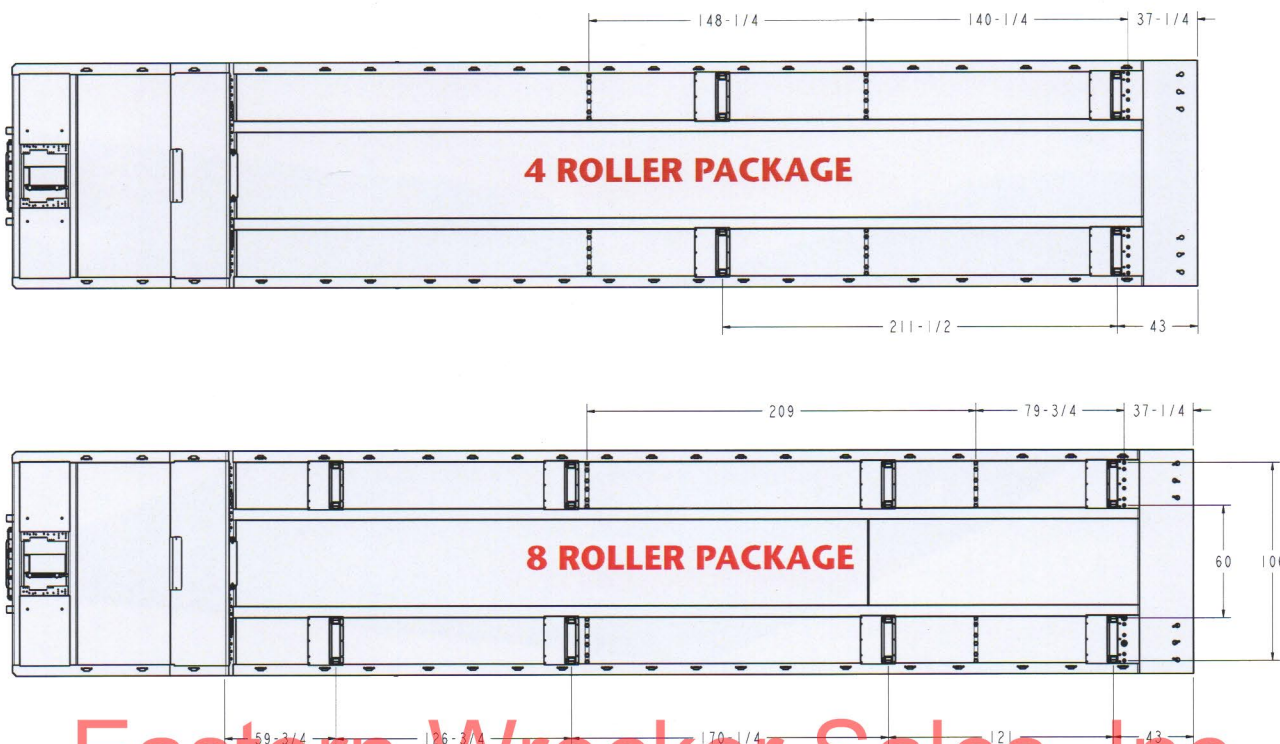
Eastern Wrecker Sales, Inc

[www.easternwrecker.com](http://www.easternwrecker.com) - 919-553-4038





# Model 455 Kicker Roller Greaseable Heavy Duty Roller

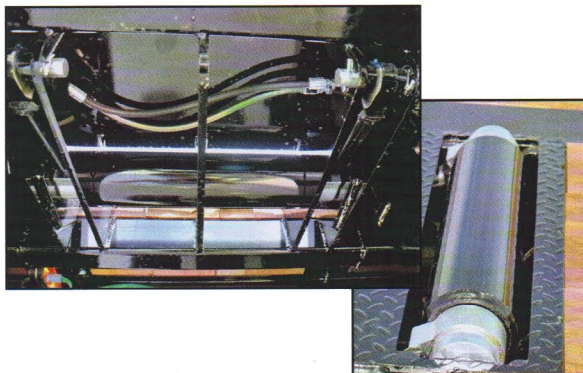


## Eastern Wrecker Sales, Inc.

### DELIVER MORE THAN EQUIPMENT:

The Landoll ground loading traveling axle trailer is a great solution for loading equipment. Now it can handle skid-mounted equipment for the oil fields and other industries. Hydraulic rollers are stored below the deck surface. Independent hydraulic controls raise rollers 2½" above the deck. The Kicker Roller Package allows the operator to winch a skid onto the deck at a low 6° load angle. This gentle loading can be used on the most valuable commodities. The Kicker Roller Package is ideal for skids, tanks, bunks for the oil fields, skid mounted containers (as shown) and portable buildings for commercial applications.

The dual hydraulic lift cylinder system adds strength and stability while lifting or operating on the rollers. The end-mounted lift cylinders are directly in alignment with the roller guidance tracks. The guidance tracks keep the rollers from binding, even when rollers rise unevenly under heavy loads.



Trailer Width		
	102"	120"
OD Roller	83"	106"
ID Roller	53"	60"
Roller Width	15"	23"

Roller Package		
	4 Roller Package	8 Roller Package
6 Skid Alignment Receivers and Pins	X	X
6 Pin Locations	X	X
Roller Row Independently Operated	Front 2 / Rear 2	Front 4 / Rear 4
10,000 lb. per Roller Capacity	X	X

**Proven Solutions for Your Hauling Needs!**  
**Remember: Quality is Always a Bargain!**



**Eastern Wrecker Sales, Inc**  
**www.easternwrecker.com - 919-553-4038**