

**BEST KEPT  
SECRETS**

# Product Manual: Standard Duty Wreckers

***JERR-DAN***<sup>®</sup>

An Oshkosh Corporation Company

13224 Fountainhead Plaza  
Hagerstown, MD 21742  
Phone (717) 597-7111  
[www.jerr-dan.com](http://www.jerr-dan.com)

Rev A January 2018

© 2017 Jerr-Dan Corporation. All Rights Reserved





Jerr-Dan Corporation strives to provide information that is accurate, complete and useful. Descriptions and illustrative material contained within this manual are as accurate as known at the time of publication and are subject to change, without notice, as a result of continuous product improvements. Jerr-Dan reserves the right to amend the information in this document at any time without prior notice.

Please report comments and/or errors by contacting Jerr-Dan Corporation's Technical Publications Department by e-mail at [technicalpublications@jerr-dan.com](mailto:technicalpublications@jerr-dan.com) or by FAX on 717-485-7162.

Jerr-Dan and the Jerr-Dan logo are registered trademarks and Run Hard is a service mark of Jerr-Dan Corporation, Hagerstown, MD USA.

The material in this document is confidential and the property of Jerr-Dan Corporation. No part of this document may be photocopied, reproduced or translated to another language without the express written consent of Jerr-Dan Corporation.

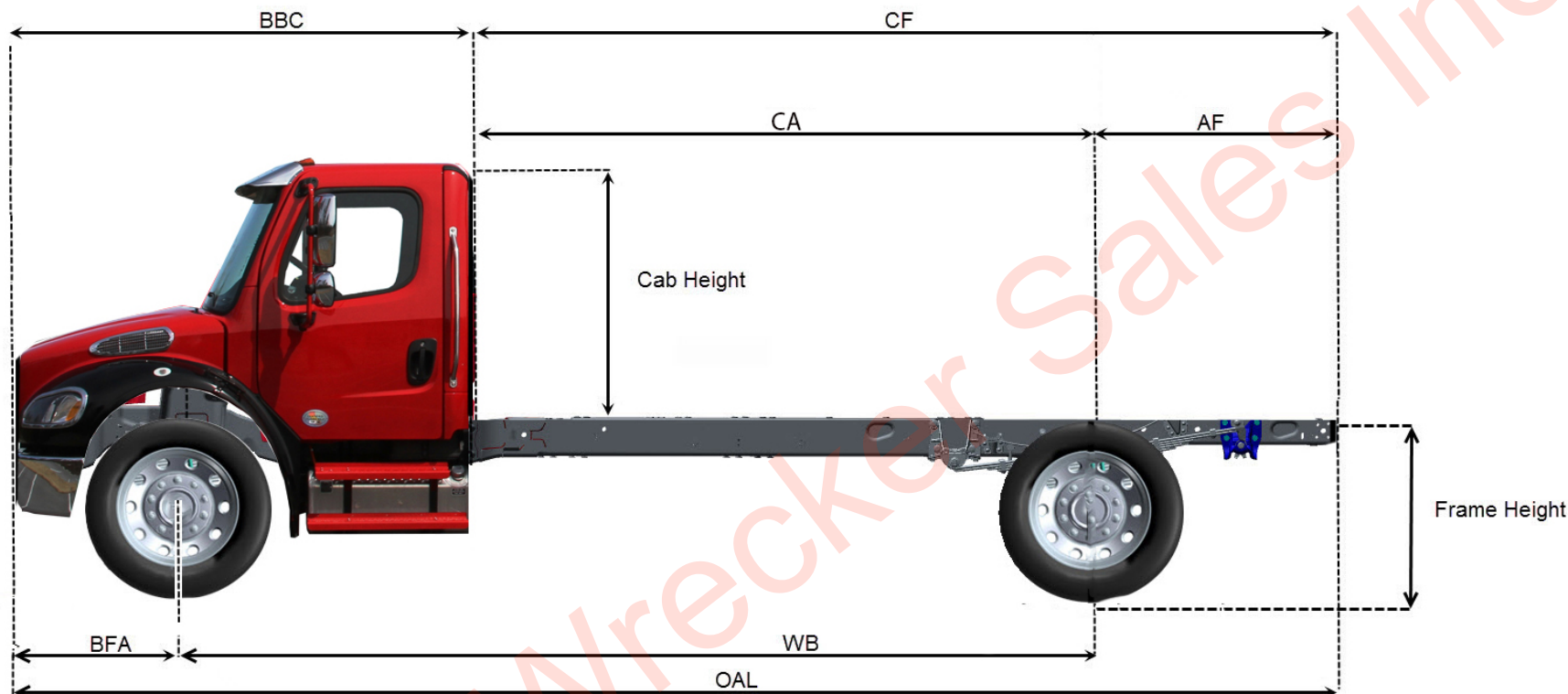
MANUFACTURED BY: JLG INDUSTRIES, INC.	
FOR:	<b>JERR-DAN</b> <small>An Oshkosh Corporation Company</small>
SERIAL NO.	<input type="text"/>
MODEL NO.	<input type="text" value="AAA"/>
1001127220-00	

SERIAL NO. <input type="text"/>	
MODEL NO. <input type="text" value="A"/>	
UNDER LIFT RATING (MAXIMUM)	
<input type="text" value="B"/>	LBS.
BOOM RATINGS (MAXIMUM) SAE J2512	
EXTENDED	<input type="text" value="C"/> LBS.
RETRACTED	<input type="text" value="D"/> LBS.
WINCH RATING: SAE J706	
EACH DRUM	<input type="text" value="E"/> LBS.
WIRE ROPE:	
WORKING LOAD LIMIT	<input type="text" value="F"/> LBS.
TYPE <input type="text" value="G"/>	SIZE <input type="text" value="H"/> FT.
<div> <b>WARNING</b> </div> <p>READ OPERATOR'S MANUAL AND FAMILIARIZE YOURSELF WITH THE OPERATION PRIOR TO USING THIS EQUIPMENT. KNOW THE LOADS BEING MOVED. DO NOT EXCEED RATED CAPACITIES.</p>	
<div> <b>WARNING</b> </div> <p>ALL RATINGS ARE BASED ON THE STRUCTURAL CAPACITY OF ABOVE MODEL. ACTUAL TOWING AND RECOVERY CAPACITY MAY BE LIMITED BY THE CAPACITY OF THE CHASSIS AND EQUIPMENT SELECTED.</p>	
MANUFACTURED BY: JLG INDUSTRIES, INC.	
FOR: <b>JERR-DAN</b> <small>An Oshkosh Corporation Company</small>	
13224 Fountainhead Plaza Hagerstown, MD 21742 Phone (717) 597-7111 <a href="http://www.jerr-dan.com">www.jerr-dan.com</a>	
1001132509-A	

## Table of Contents

Critical Chassis Measurements	4
Chassis Requirements	5
MPL40 Special Paint Options	6
MPL-NG/NGS Special Paint Options	7
HPL-35 & HPL-60 Special Paint Options	8
MPL-NG/NGS Spec Sheet	10
Body Types	11
Winch Options	12
Winch Cable Options	12
Control Options	13
Control Accessories	14
Body Options	15
MPL40 Spec Sheet	16
Base Model	17
Winch Options	18
Winch Cable Options	18
Control Options	19
Control Accessories	20
Body Options	21
MPL-NG/NGS, MPL40 Shared Options & Accessories	22
Wheel Grid Options	23
Mudflap Options	24
Fender Options	25
Light Pylon Options	26
Lighting Options	27
Tunnel Toolbox Options	28
Switch Panel Options	29
Tow Options	30
Miscellaneous Options & Accessories	31
HPL-35 Spec Sheet	32
HPL-60 Spec Sheet	33
Base Model	34
Wheel Grid Options	35
Boom Options	36
Winch Options	37
Mudflap Options	38
Light Pylon Options	39
Lighting Options	40
Tunnel Toolbox Options	41
Switch Panel Options	42
Tow Options	43
Miscellaneous Options/Accessories	44

## Critical Chassis Measurements



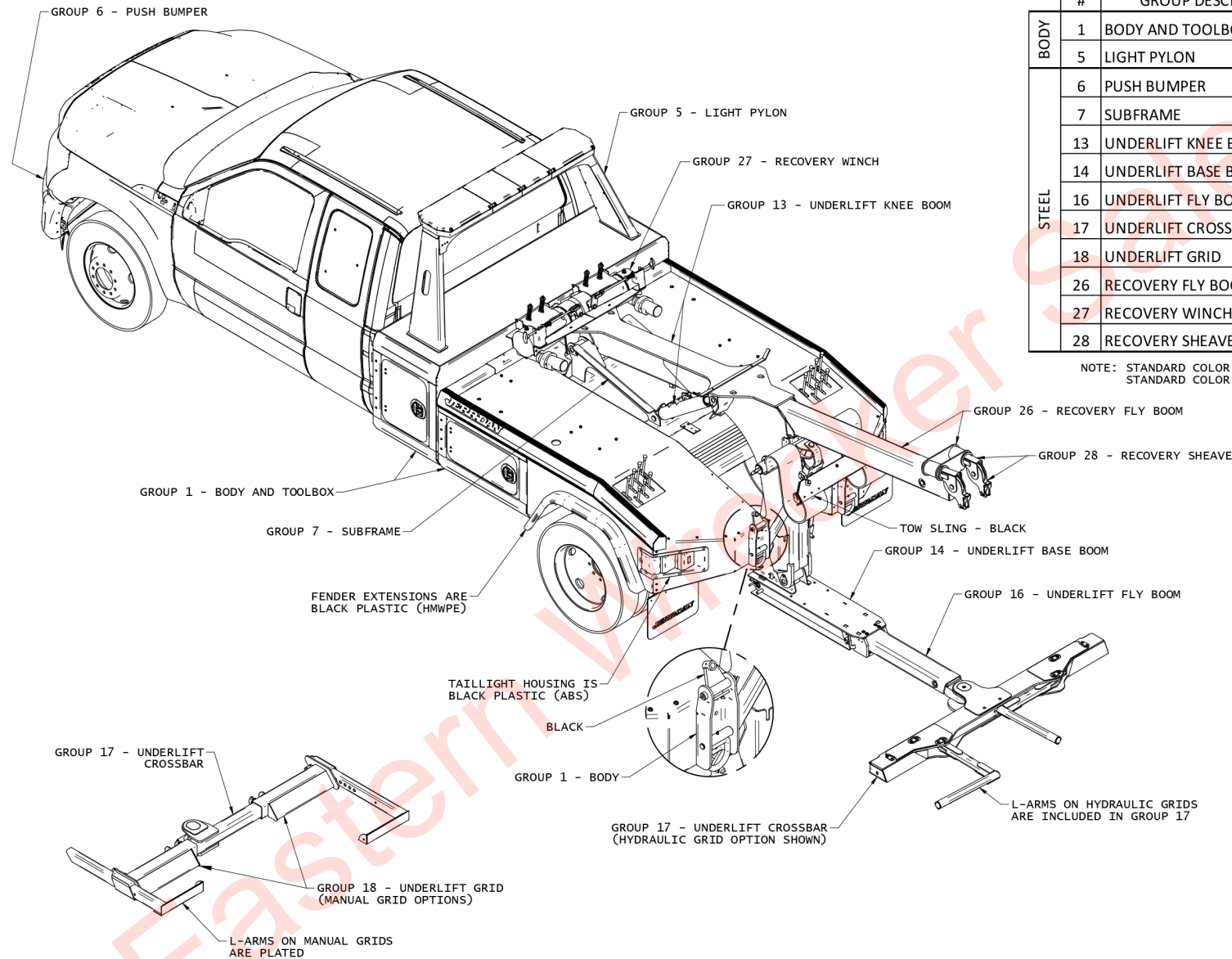
Abbreviation	Measurement	Definition
AF	After to Frame	Distance from center line of rear axle to end of frame
BBC	Bumper to Back of Cab	Distance from front bumper to back of cab
BFA	Bumper to Front Axle	Distance from Front of bumper to center line of front axle
CA	Cab to Axle	Distance from back of cab to center line of rear axle
CE	Cab to End of Frame	Distance from back of cab to end of frame
OAL	Overall Length	Total length of the vehicle
WB	Wheel Base	The distance between the center lines of the front and rear axles.



## Chassis Requirements

Chassis Requirements (Min)						
		MPL - NGS	MPL - NG	MPL40	HPL35	HPL60
RBM (Resisting Bending Moment)	Minimum RBM (11,000 lbs. GVWR)	460,000 (in-lb) (230,000 per rail)	460,000 (in-lb) (230,000 per rail)	460,000 (in-lb) (230,000 per rail)	460,000 (in-lb) (230,000 per rail)	1,000,000 (in-lb) (500,000 per rail)
	Recommended RBM (17,000 lbs. GVWR)	1,000,000 (in-lb) (500,000 per rail)	1,000,000 (in-lb) (500,000 per rail)	1,000,000 (in-lb) (500,000 per rail)	1,000,000 (in-lb) (500,000 per rail)	1,000,000 (in-lb) (500,000 per rail)
GVWR (Gross Vehicle Weight Rating)	Minimum GVWR	11,000 lbs.	11,000 lbs.	11,000 lbs.	11,000 lbs.	15,000 lbs.
	Recommended GVWR	17,000 lbs.	17,000 lbs.	17,000 lbs.	17,000 lbs.	17,000 lbs.
Usable CA (Back of Cab to Centerline of Rear Axle)	Minimum CA	60 in.	60 in.	60 in.	60 in.	60 in.
	Maximum CA	84 in.	84 in.	84 in.	108 in.	108 in.
Frame Length (Behind Rear Most Axle)	Minimum	36 in.	36 in.	36 in.	36 in.	36 in.
Frame Height	Minimum / Maximum	32 - 36 in.	32 - 36 in.	32 - 38 in.	32 - 41 in.	32 - 41 in.

## MPL40 Special Paint Options

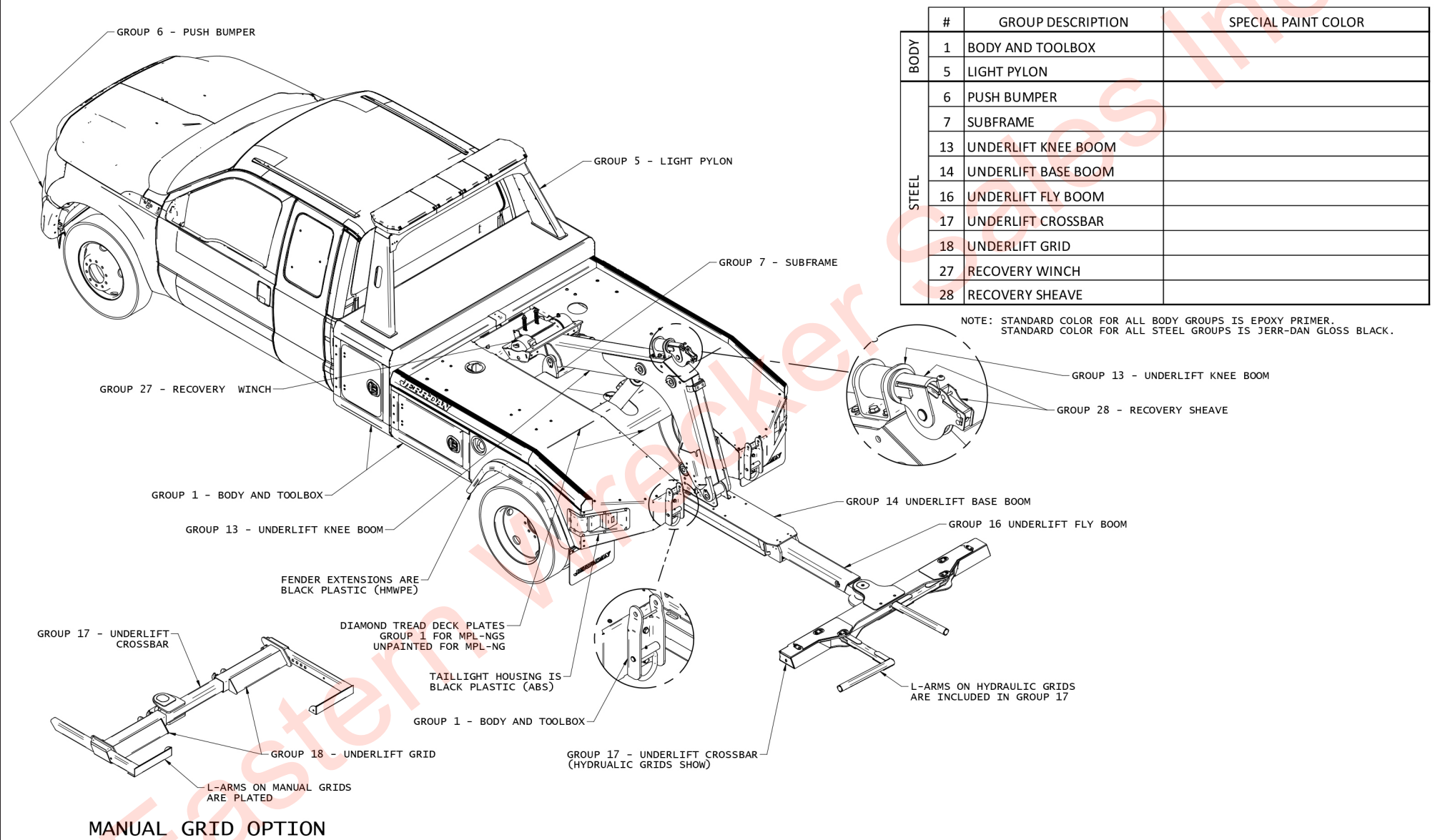


	#	GROUP DESCRIPTION	SPECIAL PAINT COLOR
BODY	1	BODY AND TOOLBOX	
	5	LIGHT PYLON	
STEEL	6	PUSH BUMPER	
	7	SUBFRAME	
	13	UNDERLIFT KNEE BOOM	
	14	UNDERLIFT BASE BOOM	
	16	UNDERLIFT FLY BOOM	
	17	UNDERLIFT CROSSBAR	
	18	UNDERLIFT GRID	
	26	RECOVERY FLY BOOM	
	27	RECOVERY WINCH	
	28	RECOVERY SHEAVE	

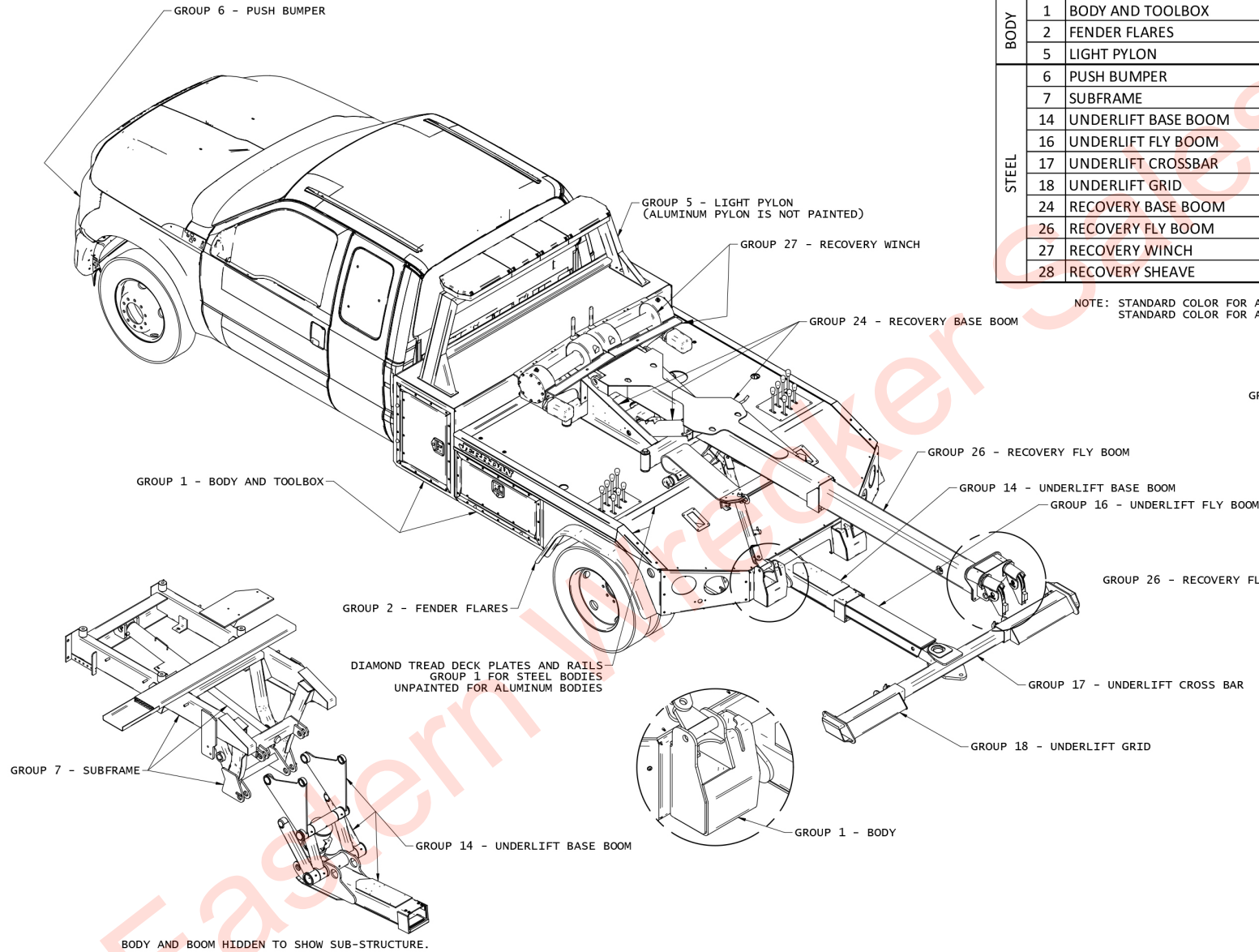
NOTE: STANDARD COLOR FOR ALL BODY GROUPS IS EPOXY PRIMER.  
STANDARD COLOR FOR ALL STEEL GROUPS IS JERR-DAN GLOSS BLACK.

MANUAL GRID OPTION

MPL-NG/NGS Special Paint Options

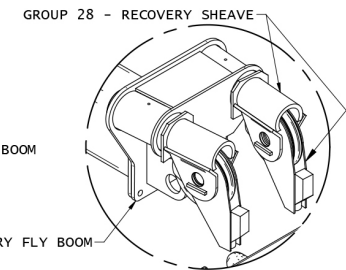


## HPL-35 & HPL-60 Special Paint Options



	#	GROUP DESCRIPTION	SPECIAL PAINT COLOR
BODY	1	BODY AND TOOLBOX	
	2	FENDER FLARES	
	5	LIGHT PYLON	
STEEL	6	PUSH BUMPER	
	7	SUBFRAME	
	14	UNDERLIFT BASE BOOM	
	16	UNDERLIFT FLY BOOM	
	17	UNDERLIFT CROSSBAR	
	18	UNDERLIFT GRID	
	24	RECOVERY BASE BOOM	
	26	RECOVERY FLY BOOM	
	27	RECOVERY WINCH	
	28	RECOVERY SHEAVE	

NOTE: STANDARD COLOR FOR ALL BODY GROUPS IS EPOXY PRIMER.  
STANDARD COLOR FOR ALL STEEL GROUPS IS JERR-DAN GLOSS BLACK.



Page Left Blank Intentionally



## MPL-NG/NGS Spec Sheet

### MPL-NG Features

- Corrosion-resistant modular aluminum body
- Polished aluminum rails and diamond deck
- Low-maintenance No-Lube™ technology
- Enclosed aluminum pylon
- LED DOT Lighting
- Illuminated driver and passenger-side toolboxes
- Winch include manual winch free spool and tensioner
- Adjustable Underlift Level Stop Assist System®
- Back-up Alarm
- Multiple grid options:
  - Manual / fixed L-arms
  - Hydraulic self-loader (including the patented LOCKLINK® over-center locking mechanism)
  - Manual / pivoting L-arms

### MPL-NGS Features

- Steel Body
- Steel diamond deck
- Low-maintenance No-Lube™ technology
- Steel pylon
- LED DOT Lighting
- Remote underlift and winch controls
- Winch include manual winch free spool and tensioner
- Adjustable Underlift Level Stop Assist System®
- Back-up Alarm
- Multiple grid options:
  - Manual / fixed L-arms
  - Hydraulic self-loader (including the patented LOCKLINK® over-center locking mechanism)
  - Manual / pivoting L-arms

### Capacities

- Underlift
  - 4,000 lbs fully extended

### Winch Option

- Winch
  - 8,000 lbs - 3/8" x 75' or 110' wire rope (single worm)
  - Winch drum capacity is 190'

### Accessories

- Aluminum 24" tunnel toolbox (84" CA required)
- Fifth wheel & gooseneck trailer adapters
- Motorcycle towing adapter (hydraulic grid only)
- Tow sling
- Headboard work lights
- Fold-down light bar
- Tow dollies & storage brackets
- Body stone guards
- Spade-foot
- D-rings
- Tow lights
- Rubber wheel chocks
- Fire extinguisher
- Safety triangle kit
- LED emergency lighting

### Chassis

- Minimum RBM (Resisting Bending Moment)
  - 460,000 in lbs (230,000 in lbs per frame rail)
- Minimum Usable CA (Cab to Axle centerline)
  - 60"
- Minimum GVWR (Gross Vehicle Weight Rating)
  - 11,000 lbs
- Maximum unloaded frame height
  - 36"
- Minimum frame length behind the center of rear axle
  - 36"

## Body Types



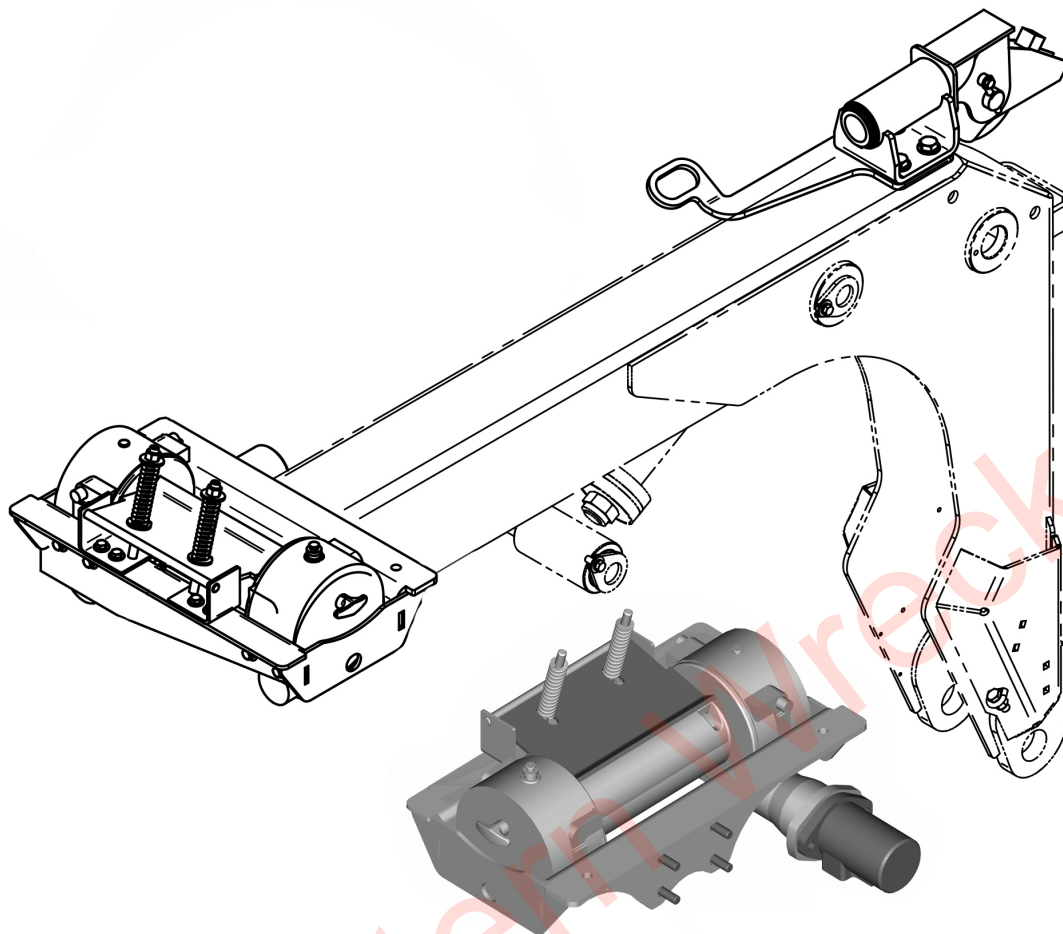
• MPL-NGS Steel Body



• MPL-NG Aluminum Body



## Winch Options MPL-NG/NGS



- 8K Worm with Swivel Guide & Cable Tensioner
  - 1001208911

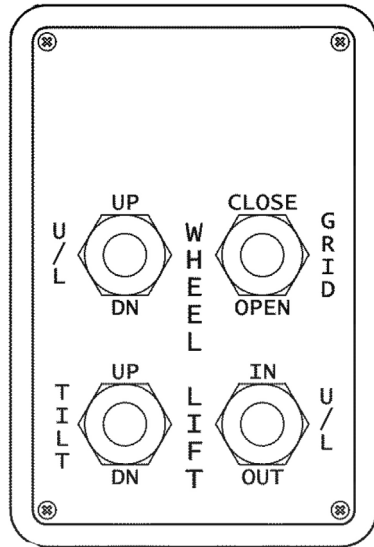
## Winch Cable Options



Wire Rope	Item
Cable 3/8" x 75' 2-Ton EIPS	C38D75
Cable 3/8" x 110' 2-Ton EIPS	C38D100

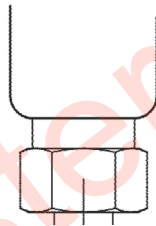
\*All Wire Rope is Galvanized

## Control Options MPL-NG/NGS



### CONSTRUCTION:

- HIGH IMPACT PLASTIC SHELL
- MARINE GRADE TOGGLE SWITCHES
- WATER TIGHT CONSTRUCTION



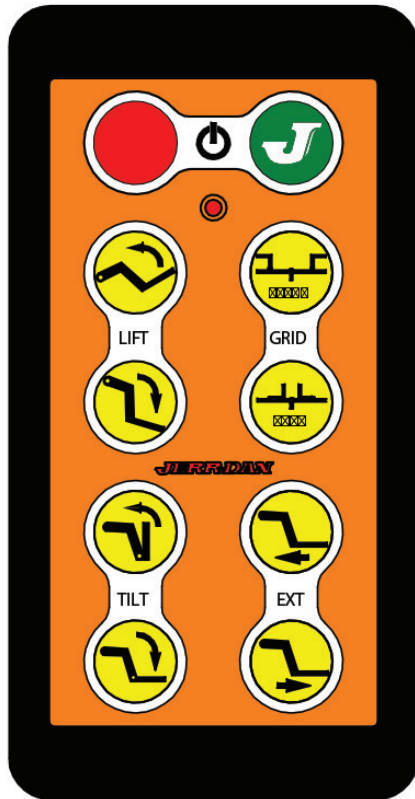
- Wired Remote with Toggle Switches for Underlift Functions
  - Item: 3509330126



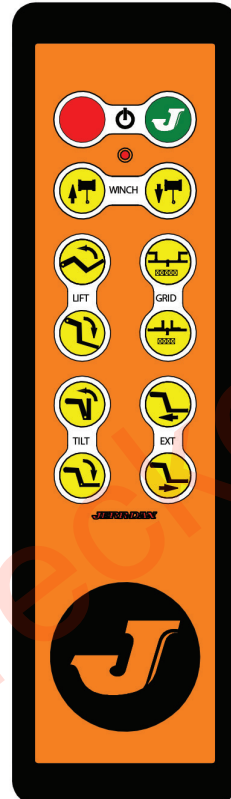
- Wired Remote with Membrane Touch-Pad Switches for Underlift and Winch Functions
  - Item: 1001127427



## Control Accessories MPL-NG/NGS



- Wireless Remote for Underlift Functions Only
  - Item: 2295000015



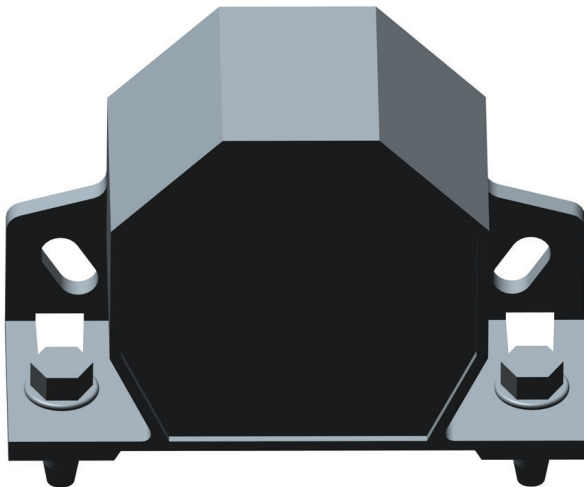
- Wireless Remote for Underlift & Winch Functions
  - Item: 2295000016



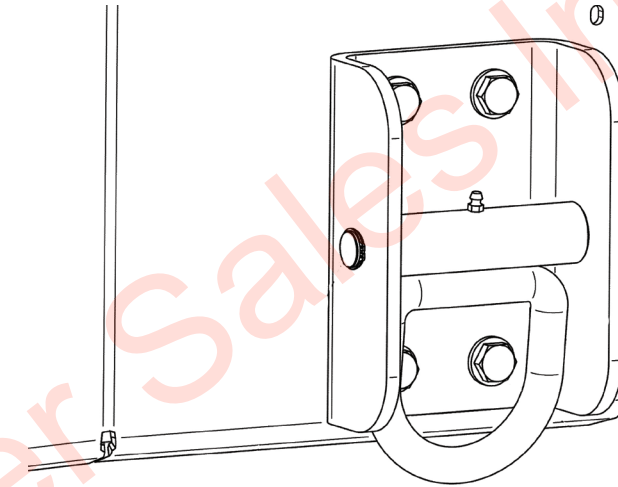
- Buzz Box Holder for Remote Control
  - Item: 2002000031

- Anti-Stall Control (Not Shown)
  - Required for 2016 & Older Ford Gas Applications)

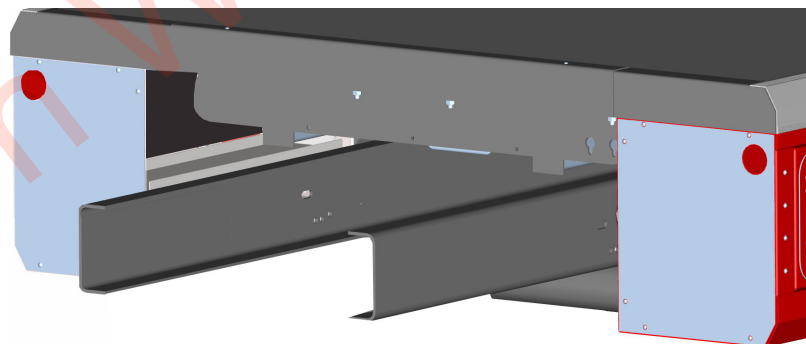
## Body Options MPL-NG/NGS



- Back up Alarm - Fixed @ 97db
  - Item: 2011000002
- Back up Alarm - Variable @ 82db to 102 db
  - Item: 2011000003



- 3/4" Diameter Bolt-on D-Rings
  - Item: 2754000007



- Aluminum Stone Guard Kit for Aluminum Body
  - Item: 2002000027

## MPL40 Spec Sheet

### Features

- Corrosion-resistant modular aluminum body
- Polished aluminum rails and diamond deck
- Low-maintenance No-Lube™ technology
- Enclosed aluminum pylon
- LED DOT Lighting
- Dual Manual deck Controls
- Illuminated driver and passenger-side toolboxes
- Winches include manual winch free spool and tensioner
- High-strength extendable recovery boom
- Adjustable Underlift Level Stop Assist System®
- Back-up Alarm
- Multiple grid options:
  - Manual / fixed L-arms
  - Hydraulic self-loader (including the patented LOCKLINK® over-center locking mechanism)
  - Manual / pivoting L-arms

### Capacities

- Underlift
  - 4,000 lbs fully extended
- Boom (per SAEJ2512)
  - 16,000 lbs retracted
  - 6,000 lbs extended
- Winches
  - 8,000 lbs - 3/8" x 110' wire rope (single or dual worm)

### Accessories

- 24" tunnel toolbox (84" CA required)
- Fifth wheel & gooseneck trailer adapters
- Motorcycle towing adapter (hydraulic grid only)
- Wired and wireless remote underlift controls
- Tow sling
- Headboard work lights
- Fold-down light bar
- Tow dollies & storage brackets
- Body stone guards
- Spade-foot
- D-Rings
- Tow lights
- Rubber wheel chocks
- Fire extinguisher
- Safety triangle kit
- LED Emergency lighting

### Chassis

- Minimum RBM (Resisting Bending Moment)
  - 460,000 in lbs (230,000 in lbs per frame rail)
- Minimum Usable CA (Cab to Axle centerline)
  - 60"
- Minimum GVWR (Gross Vehicle Weight Rating)
  - 11,000 lbs
- Maximum unloaded frame height
  - 38"
- Minimum frame length behind the center of rear axle
  - 36"

**Base Model  
MPL40**



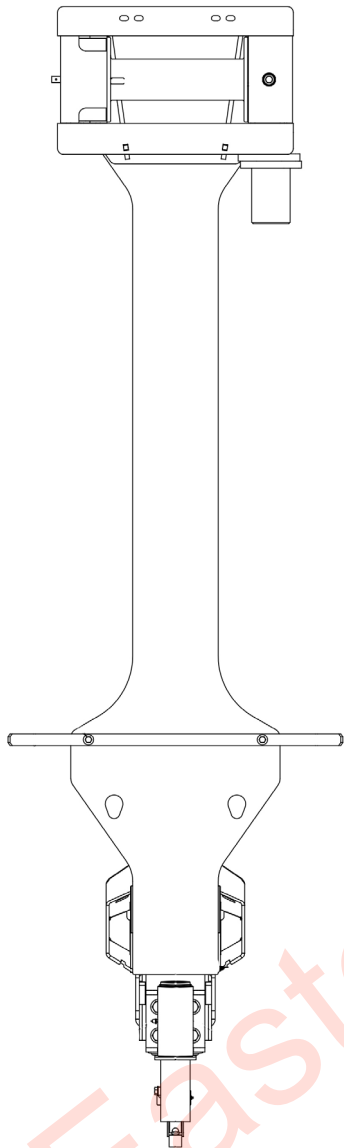
- MPL40 with Recovery Boom (Shown with Tow Sling)



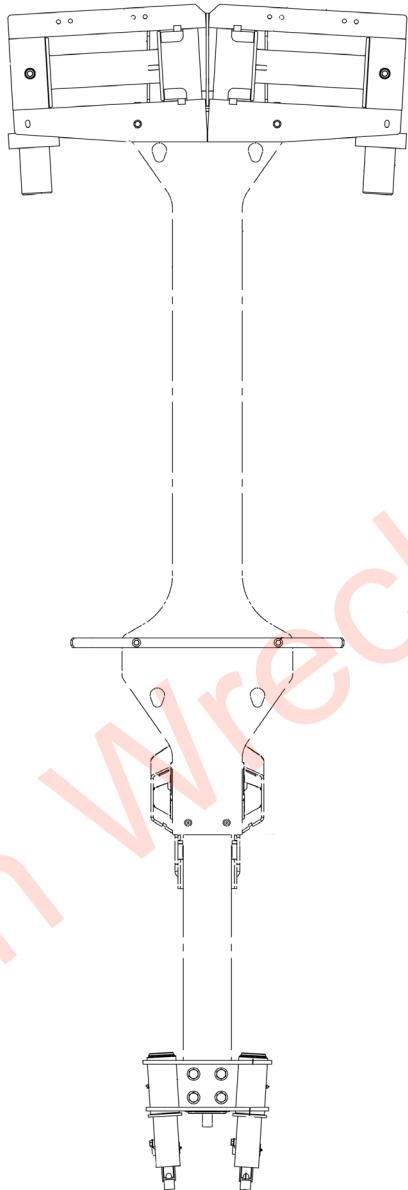
- MPL40 with Recovery Boom



**Winch Options**  
**MPL40**



- Single 8K Worm Gear Winch
  - Item: WS8SW



- Dual 8K Worm Gear Winch
  - Item: WO8DW

**Winch Cable Options**

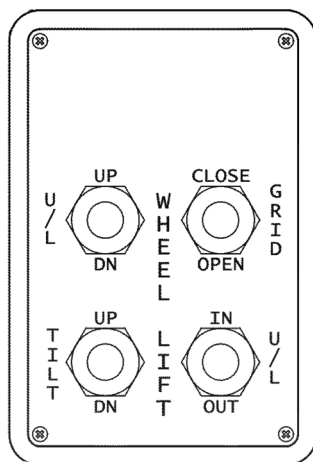


Wire Rope	Item
Cable 3/8" x 110'	C38D100
Cable 3/8" x 110' (Qty 2)	1001181886
Cable 3/8" x 110' w/Swivel Hook	C38D100WSH
Cable 3/8" x 110' w/Swivel Hook (Qty 2)	1001181889

\*All Wire Rope is Galvanized

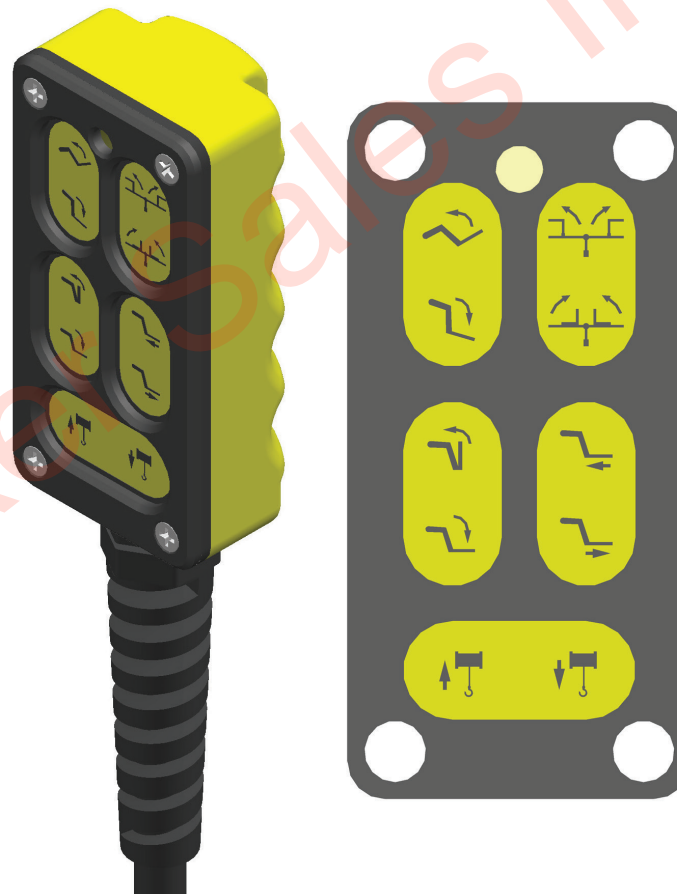


## Control Options MPL40



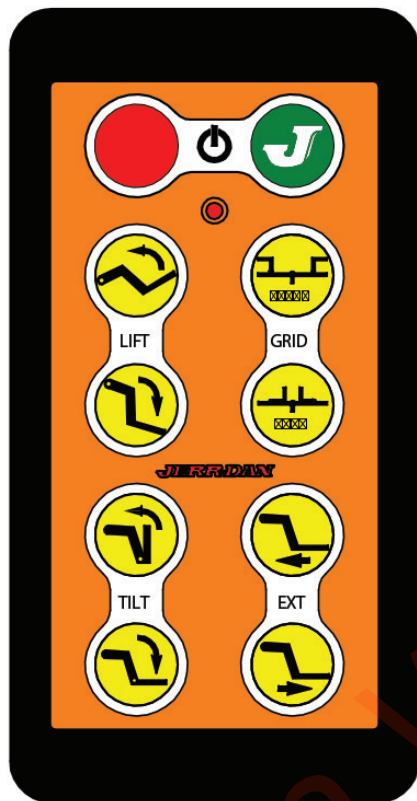
CONSTRUCTION:  
 - HIGH IMPACT PLASTIC SHELL  
 - MARINE GRADE TOGGLE SWITCHES  
 - WATER TIGHT CONSTRUCTION

- Wired Remote with Toggle Switches for Underlift Functions
  - Item: 3509330097



- Wired Remote with Membrane Touch-Pad Switches for Underlift and Winch Functions
    - Item: 1001127426
- \*Winch function does not operate winches on MPL-40

## Control Accessories MPL40



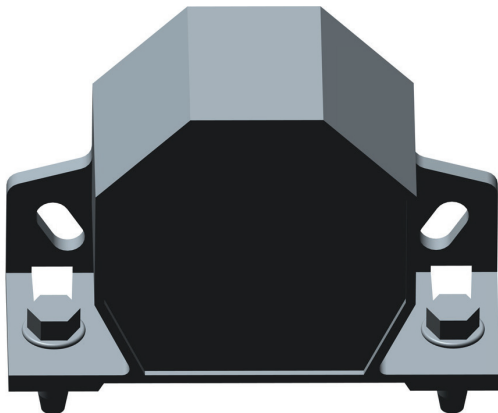
- Wireless Remote for Underlift Functions Only
  - Item: 2295000015



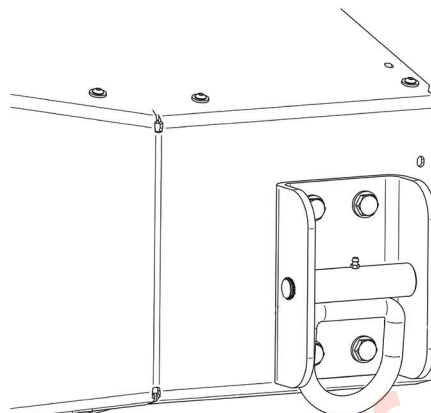
- Buzz Box Holder for Remote Control
  - Item: 2002000031

- Anti-Stall Control (Not Shown)
  - Required for 2016 & Older Ford Gas Applications)

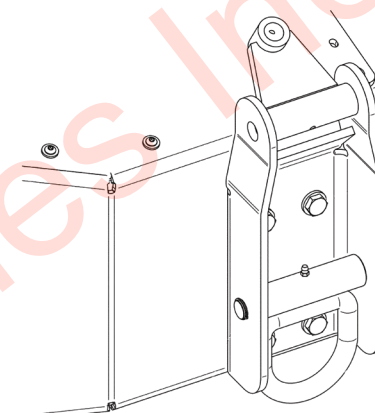
## Body Options MPL40



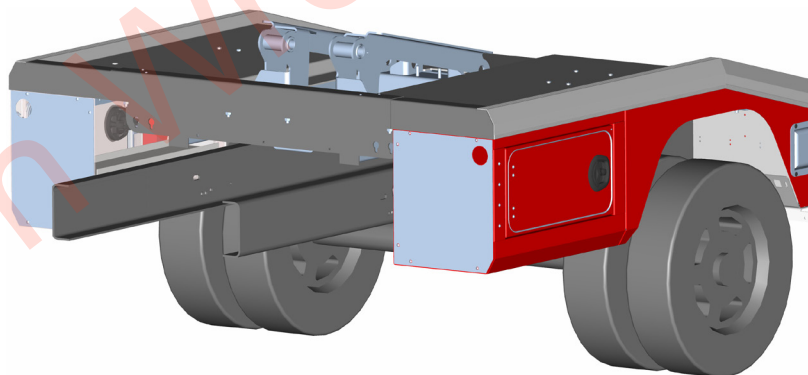
- Back up Alarm - Fixed @ 97db
  - Item: 2011000002
- Back up Alarm - Variable @ 82db to 102 db
  - Item: 2011000003



- 3/4" Diameter Bolt-on D-Rings
  - Item: 2754000007



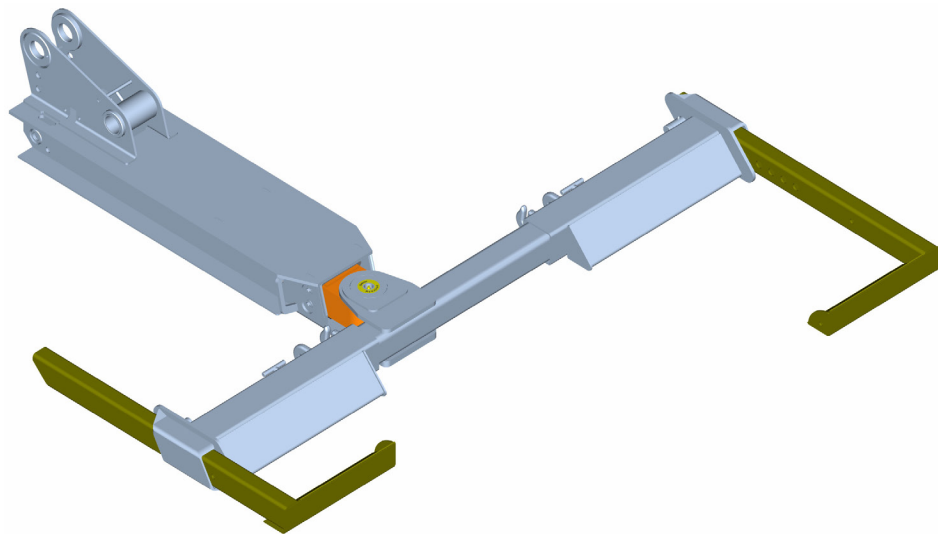
- 3/4" Diameter Bolt-on D-Rings for Tow Sling Option
  - Item: 2754000008



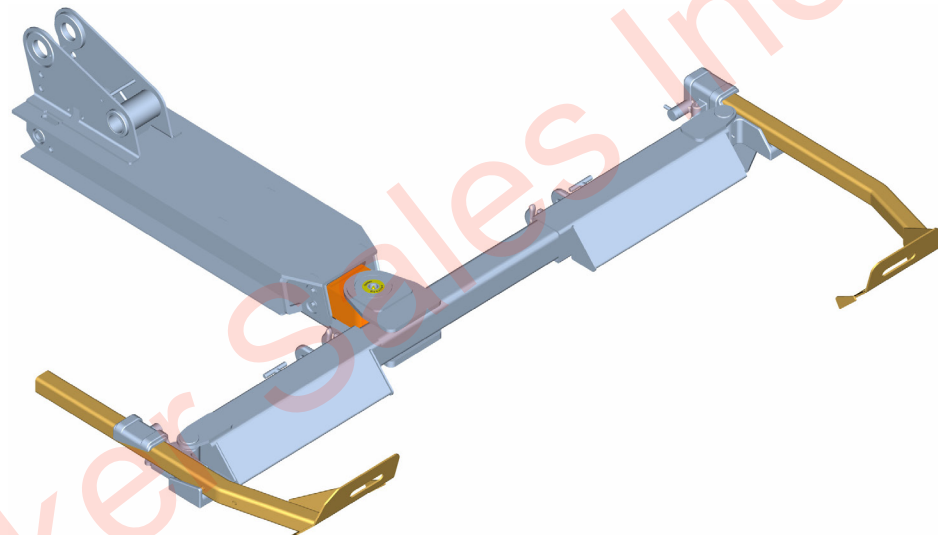
- Aluminum Stone Guard Kit for Aluminum Body
  - Item: 2002000027

**MPL-NG/NGS, MPL40 Shared Options & Accessories**

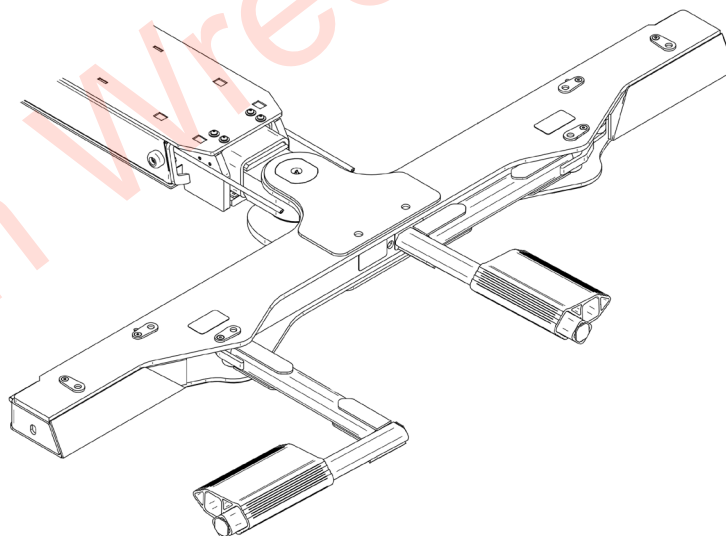
## Wheel Grid Options



• Manual 4,000 lb Wheel Grids



• T-37 Pivoting 4,000 lb Wheel Grids



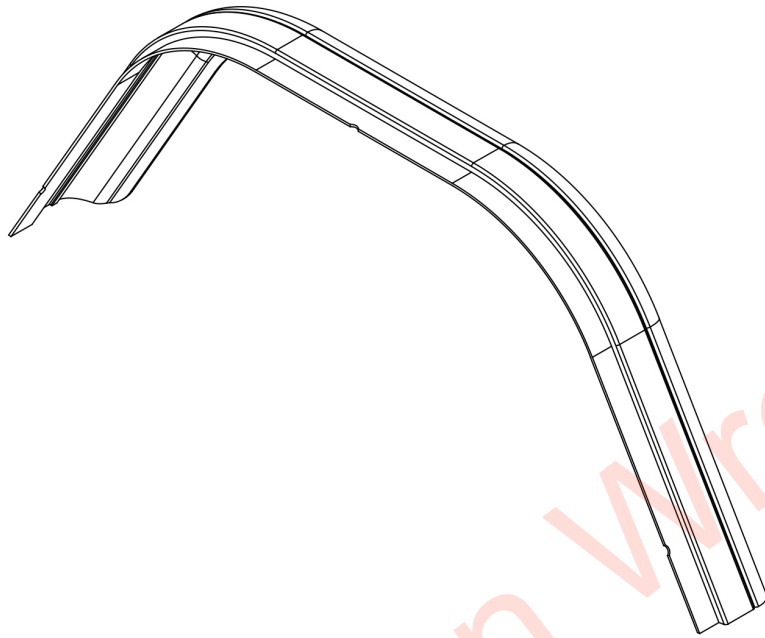
• Hydraulic 4,000 lb Wheel Grids

## Mudflap Options

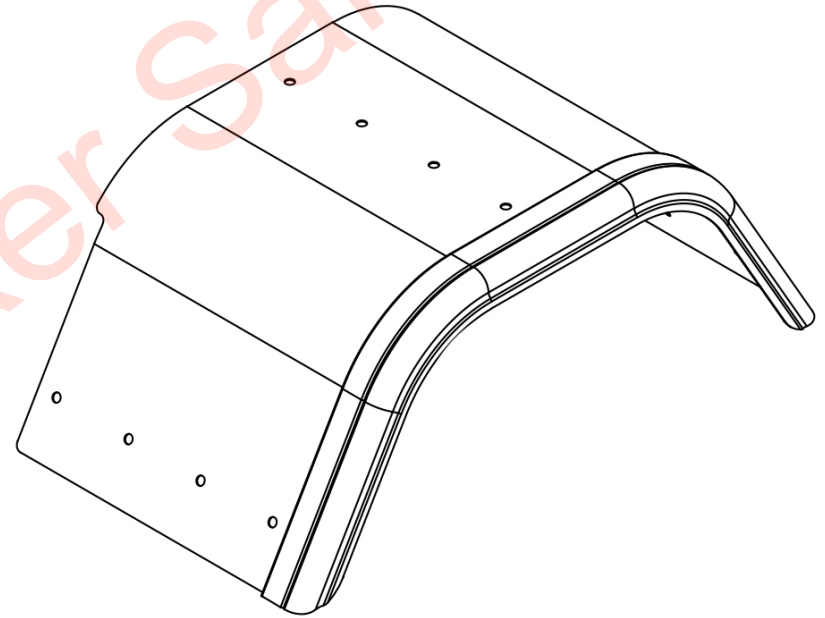


- Mudflap Brackets with Jerr-Dan Mudflaps
  - Item: 2638000006

## Fender Options



- 1.62" Poly Fenders for Ford F350
  - Item: 2415000030
- 3.50" Poly Fenders for Ford F450-F550 / Dodge
  - Item: 2415000031
- 3.50" Poly Fenders No Lip for GMC
  - Item: 2415000032
- \* Poly Fenders for MPL-NGS Only



- 1.62" Poly Fender Tubs for Ford F350/GMC
  - Item: 2415000019
- 3.50" Poly Fender Tubs for Ford F450-550/Ram
  - Item: 2415000020
- \* Poly Fenders for MPL-NG and MPL40 Only



## Light Pylon Options



- Body Mounted Pylon Shown with 3 Marker Light Option



- Toolbox Mounted Pylon Shown with 1 Marker Light Option

## Lighting Options



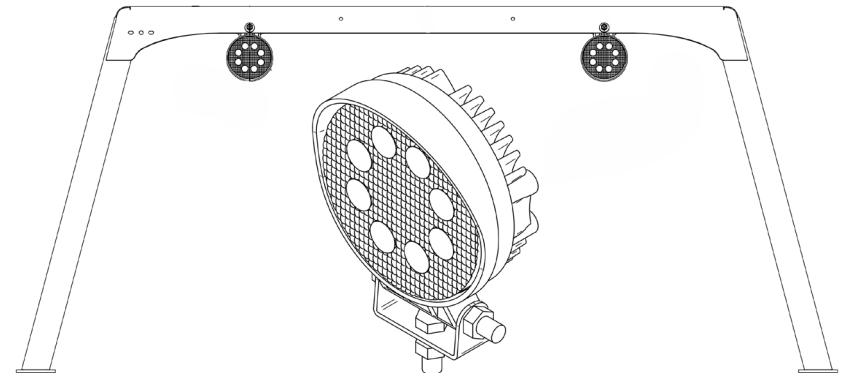
- DOT LED Light
  - Item: 2502330319



- Code 3 10-Head LED Amber 58" Light Bar
  - Item: 2590000254
- Whelen 10-Head LED Amber 60" Light Bar
  - Item: 1001137520



- Fold Down Lightbar Brackets
  - Item: 2512570086



- LED Upper-Work Lights
  - Item: 2590000126

## Tunnel Toolbox Options



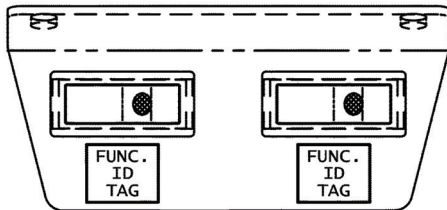
- 22" Aluminum Tunnel Toolbox for Non-Domestic Chassis
  - Item: 1001182229
- 24" Aluminum Tunnel Toolbox
  - Item: 2899000081
- 24" Aluminum Tunnel Toolbox Reinforced for Customer Supplied Signboard Application
  - Item: 2550000517



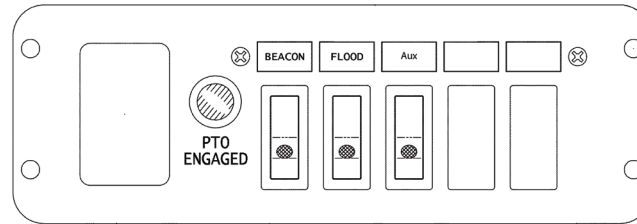
- Stone Guard Kit for Tunnel Toolbox
  - Item: 1001130410

\*Tunnels have Polished Diamond Treadtop

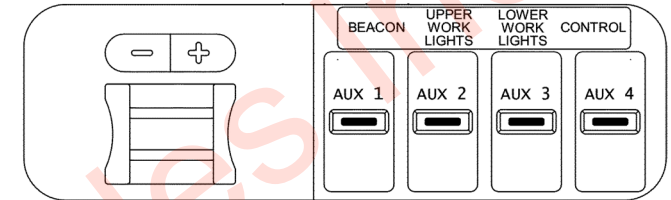
## Switch Panel Options



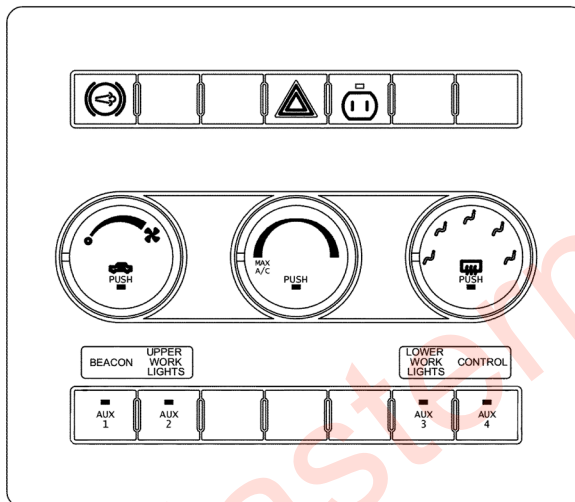
- 2 Function Switch Panel
  - Item: 2870000012



- 3 Function In-Dash Switch Panel
  - Item: 1001135754



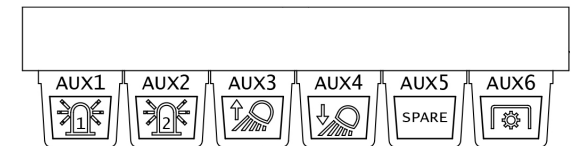
- 4 Function In-Dash 2011-2016 Ford OEM Switch Panel F450/550
  - Item: 1001135519



- 4 Function In-Dash 2011-12 Dodge Switch Panel
  - Item: 1001123375



- 5 Function In-Dash 2013+ Dodge Switch Panel
  - Item: 1001161481



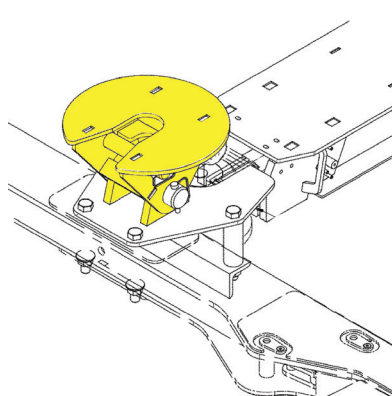
- 6 Function 2017 Ford Switch Panel
  - Item: 1001221395
  - \* Includes Smart PTO Control System



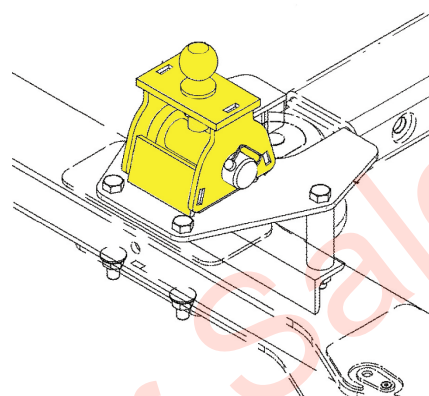
## Tow Options



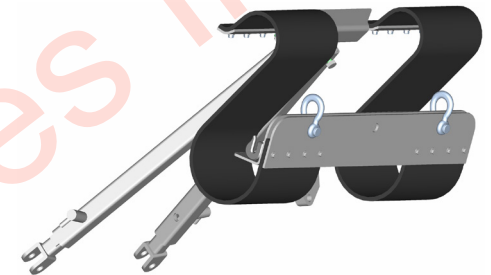
- Low Angle Recovery Sheave
  - Item: 2509610148



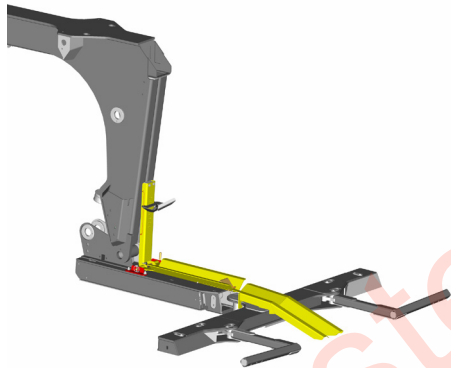
- 5th Wheel Attachment
  - Item: 2556000013



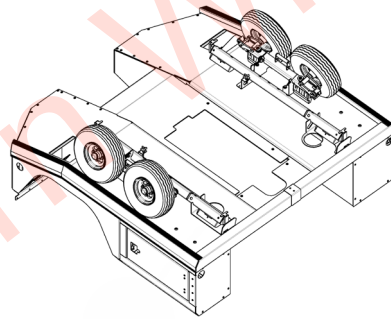
- Gooseneck Attachment
  - Item: 2556000014



- Tow Sling
  - Item: 1001208842
  - \* MPL40 Only



- Motorcycle Towing Adapter
  - Item: 2178000036



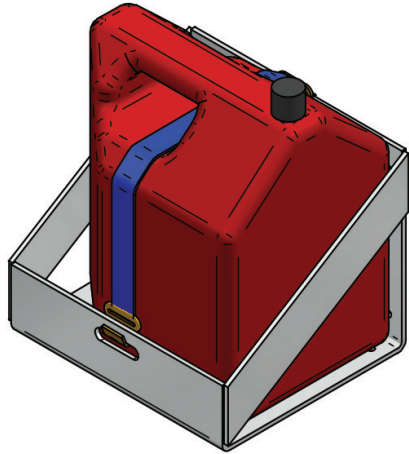
- Self-Loading Aluminum Dolly w/ Storage Brackets



- Spade Foot Attachment
  - \* MPL 40 Only

- 5th Wheel-Gooseneck Attachment Combo for Self-Loading Grids
  - Item: 2556000012
- 1-7/8" Trailer Ball
  - Item: 7056000007
- 2" Trailer Ball
  - Item: 7056000008
- 2-5/16" Trailer Ball
  - Item: 7056000009
- Rubber Wheel Chocks
  - Item: 7002000448

## Miscellaneous Options & Accessories



- Fuel Can Holder
  - Item: 1001211866
  - \* Ships Loose



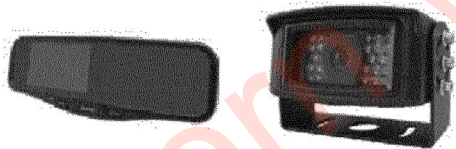
- Fire Extinguisher
  - Item: 2002000028



- Magnetic Tow Lights
  - Item: 5525000752



- Safety Triangle Kit
  - Item: 7002000285



- Back-up Camera Kit with Rear View Mirror Monitor
  - Item: 1001142974
- Back-up Camera Kit with Rear View Mirror Monitor & DVR
  - Item: 1001142973

- Suction Mounted Tow Lights w/case
  - Item: 7002000449
- Valve Stem Extension Kit with Brackets
  - Item: 2002000029

## HPL-35 Spec Sheet

### Underlift

- Lifting Capacity
  - "L" Arms: 3,500 lb
  - Opt. Frame Forks: 4,000 lb
- "L" Arm Storage Brackets: STD
- Wheel Lift Tie Down Straps: STD
- Hydraulic Tilt-Up: 12°
- Hydraulic Tilt-Down: 9°
- Distance from Tailboard to Pivot Crosstube
  - Extended: 69"
  - Retracted: 33"

### Control

- Dual Manual Wheel Lift Controls: STD
- Six Function Hydraulic Wheel Lift Up/Down, In/Out, Tilt Up/Down: STD

### Body (Standard Features)

- Rugged Modular Aluminum Construction
- Polished Aluminum Rubrails
- Aluminum Diamond Decking
- Stainless Steel Hardware
- FMVSS Lighting
- Lighted Driver's Side Toolbox
- Tow Sling Mounting Brackets
- Mud Flaps

### Hydraulic System (Standard Features)

- Direct Mount Pump
- 2 Gear Cable Shift PTO w/Warning Light
- One Magnetic Drain Plugs in Hydraulic Tank to Protect Hydraulic System

### Optional Equipment

#### Lighting

- Fold Down Aluminum Light Bar
- Three Function Switch Panel
- LED Work Lights
- Magnetic Tow Light Kit

#### Controls

- Jump Start Kit
- Remote Control for Underlift

### Recovery Booms & Winches

- Boom Ratings
  - Retracted: 8,000 - 24,000 lbs
  - Extended: 2,500 - 8,000 lbs
- Boom Reach
  - Boom Reach at 0°: 15" to 90"
  - Boom Reach at 60°: -18" to 20"
- Boom Working Angles
  - Maximum: Up to 60°
  - Minimum: 0°
- Boom Mounted Worm Gear Winches, Single & Dual Configuration
  - Available Capacities: 8,000 - 12,000 lbs
- West Coast Single & Dual Line Winch Packages
- Deck Mounted Recovery Winch
  - 8,000 lb Capacity
- Cable Tensioner Plate for Winch
- Remote Free Spool Handle

### Body

- Passenger Side Toolbox
- 24" Aluminum Tunnel Toolbox
- Full Height Aluminum Headboard
- Fiberglass Fender Flares

### Tow Options

- Pivoting Wheel Grid
- Tow Sling
- Medium Duty Truck Hitch
- Collins Self Loading Dolly
- Fork Holders
- Frame Forks
- Spring Hanger Forks

### Other

- Back-Up Alarm
- Steel Push Bumper w/Grille Guard
- Scotch Blocks w/ Mounting Brackets

### Recommended Chassis Requirements

- Minimum GVW Rating: 11,000 lbs
- Minimum Cab-to-Axle: 60"



## HPL-60 Spec Sheet

### Underlift

- Lifting Capacity
  - "L" Arms: 5,000 lb
  - Opt. Frame Forks: 6,000 lb
- "L" Arm Storage Brackets: STD
- Wheel Lift Tie Down Straps: STD
- Hydraulic Tilt-Up: 12°
- Hydraulic Tilt-Down: 9°
- Distance from Tailboard to Pivot Crosstube
  - Extended: 69"
  - Retracted: 33"

### Control

- Dual Manual Wheel Lift Controls: STD
- Six Function Hydraulic Wheel Lift Up/Down, In/Out, Tilt Up/Down: STD

### Body (Standard Features)

- Rugged Modular Aluminum Construction
- Polished Aluminum Rubrails
- Aluminum Diamond Decking
- Stainless Steel Hardware
- FMVSS Lighting
- Lighted Driver's Side Toolbox
- Tow Sling Mounting Brackets
- Mud Flaps

### Hydraulic System (Standard Features)

- Direct Mount Pump
- 2 Gear Cable Shift PTO w/Warning Light
- One Magnetic Drain Plugs in Hydraulic Tank to Protect Hydraulic System

### Optional Equipment

#### Lighting

- Fold Down Aluminum Light Bar
- Three Function Switch Panel
- LED Work Lights
- Magnetic Tow Light Kit

#### Controls

- Jump Start Kit
- Remote Control for Underlift

### Recovery Booms & Winches

- Boom Ratings
  - Retracted: 8,000 - 24,000 lbs
  - Extended: 2,500 - 8,000 lbs
- Boom Reach
  - Boom Reach at 0°: 15" to 90"
  - Boom Reach at 60°: -18" to 20"
- Boom Working Angles
  - Maximum: Up to 60°
  - Minimum: 0°
- Boom Mounted Worm Gear Winches, Single & Dual Configuration
  - Available Capacities: 8,000 - 12,000 lbs
- West Coast Single & Dual Line Winch Packages
- Deck Mounted Recovery Winch
  - 8,000 lb Capacity
- Cable Tensioner Plate for Winch
- Remote Free Spool Handle

### Body

- Passenger Side Toolbox
- 24" Aluminum Tunnel Toolbox
- Full Height Aluminum Headboard
- Fiberglass Fender Flares

### Tow Options

- Pivoting Wheel Grid
- Tow Sling
- Medium Duty Truck Hitch
- Collins Self Loading Dolly
- Fork Holders
- Frame Forks
- Spring Hanger Forks

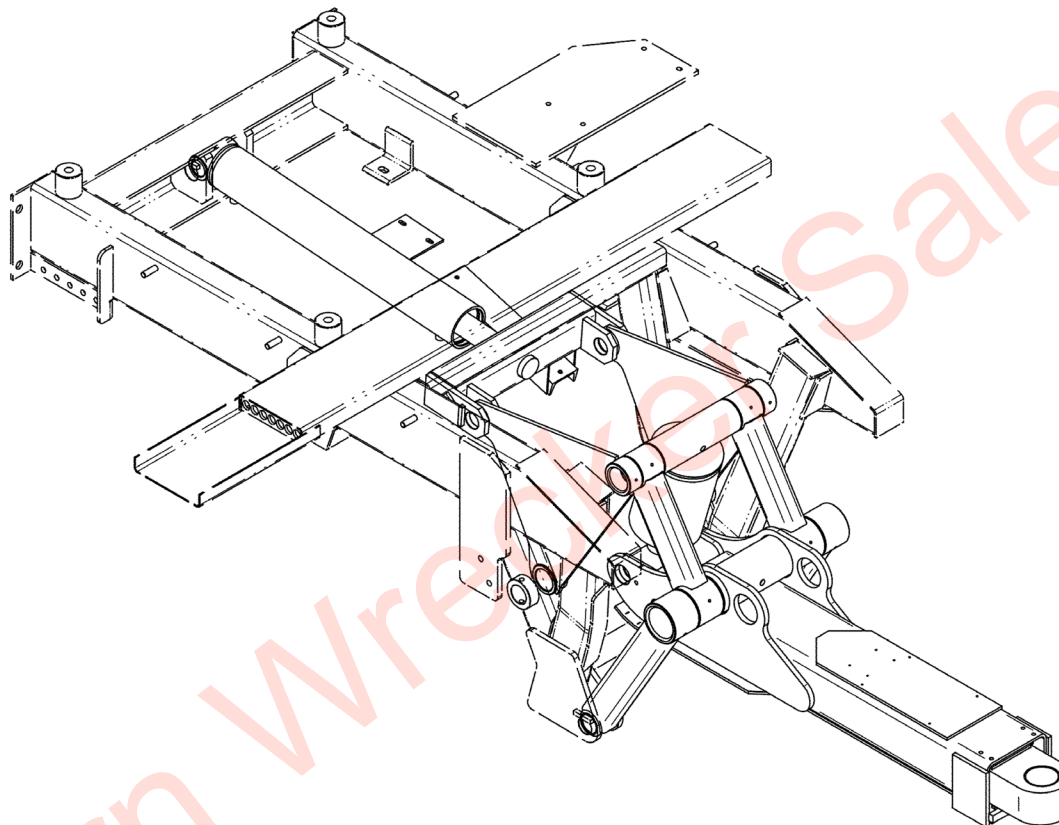
### Other

- Back-Up Alarm
- Steel Push Bumper w/Grille Guard
- Scotch Blocks w/ Mounting Brackets

### Recommended Chassis Requirements

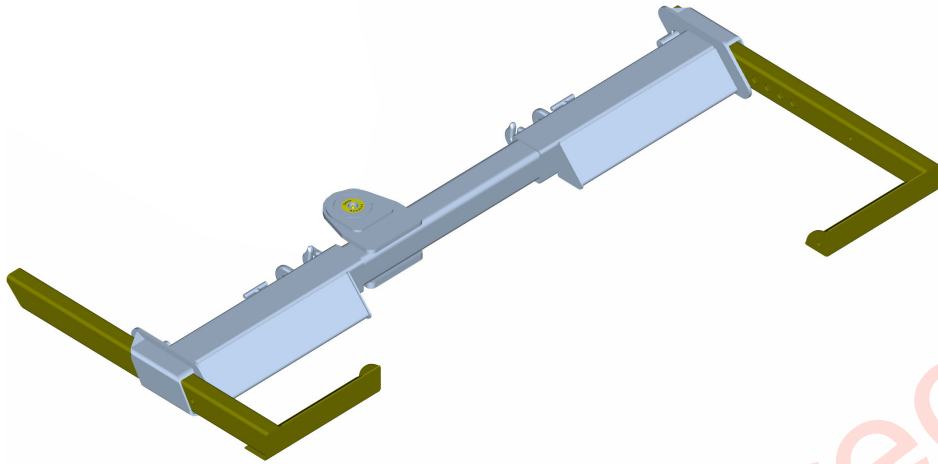
- Minimum GVW Rating: 15,000 lbs
- Minimum Cab-to-Axle: 60"

## Base Model

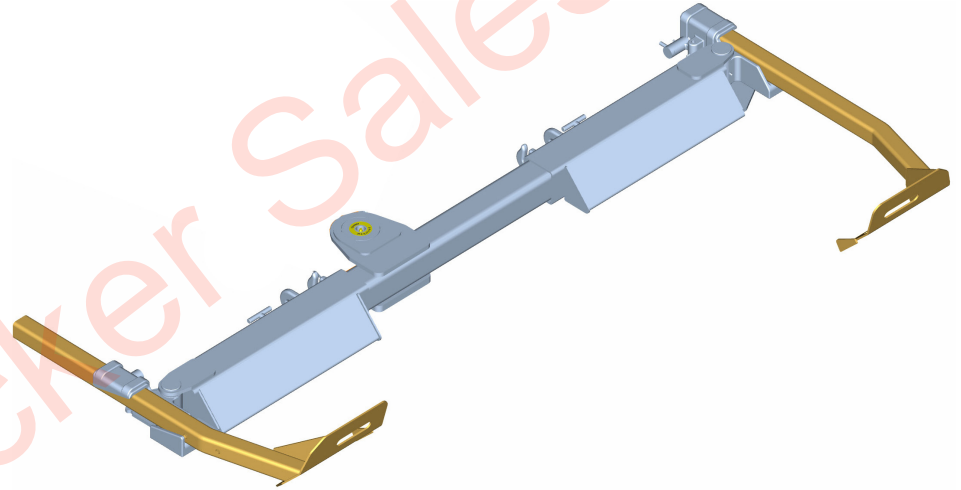


Model	Description	Item Number
HPL-35	HPL Subframe with Low Base 3,500 lb Underlift	3511100102
HPL-35	HPL Subframe with Low Base 3,500 lb Underlift & HPL60 Fly Section	1001128622
HPL-60	HPL w/Low Base 5K Underlift - Rated @ 6K Utilizing Provided Frame Forks Package	3512100091
HPL-60	HPL w/High Base 5K Underlift - Rated @ 6K Utilizing Provided Frame Forks Package	3512100128

## Wheel Grid Options



- Manual Wheel Grids
  - Item: 2511880154

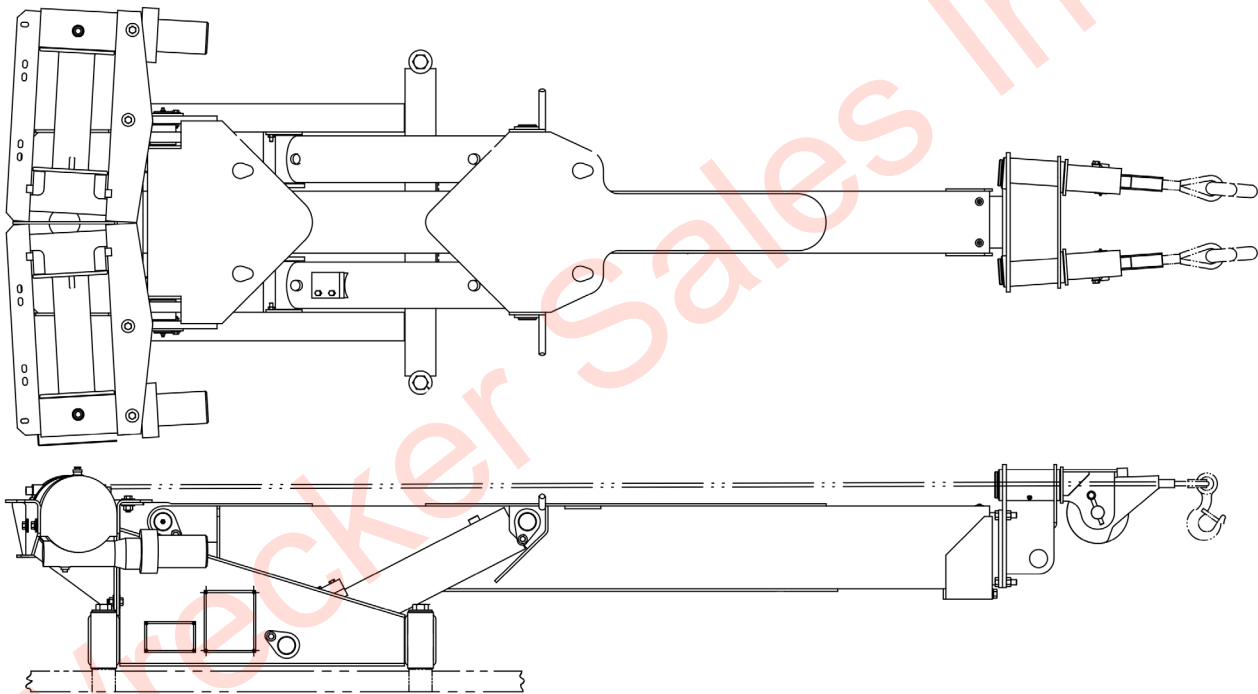


- T-37 Pivoting Wheel Grids
  - Item: 2502880223

**Boom Options**



- Deck Mounted 8K Recovery Winch Option
  - Item: 2502900043



Description	Item Number
4-Ton Wrecker Boom with Single 8K Winch	2502100063
8-Ton Wrecker Boom with Single 8K Winch	2511100084
8-Ton Wrecker Boom with Dual 8K Winches	2511100083
12-Ton Wrecker Boom with Single 10K Winch	2512100047
12-Ton Wrecker Boom with Dual 10K Winches	2512100046
12-Ton Wrecker Boom with Single 10K Winch & West Coast Package	2512100082
12-Ton Wrecker Boom with Dual 12K Winches & West Coast Package	2512100081

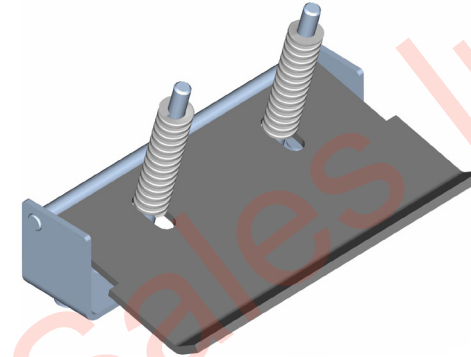
\*West Coast Package includes a larger hydraulic pump

## Winch Options

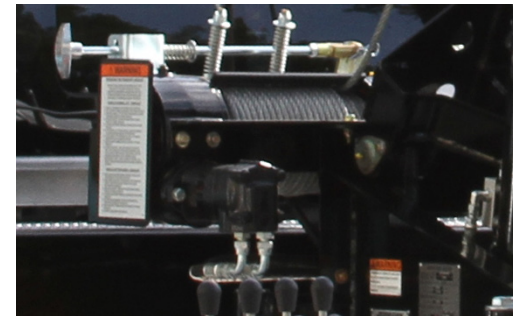


Wire Rope	Item
Cable 3/8" x 40' 2-Ton EIPS for 8K Winch (Only)	1001228282
Cable 3/8" x 101' 2-Ton EIPS	1001228283
Cable 7/16" x 101' 3-Ton EIPS	1001228284
Cable 7/16" x 150' 3-Ton EIPS	1001228285

\*All Wire Rope is Galvanized



Winch Tensioner Plate	Item
Cable Tensioner for Deck Mounted 8K Recovery Winch Only	2500900139
Cable Tensioner for 8K Boom Winch	2500900643
Cable Tensioners for Dual 8K Boom Winches	1001181892
Cable Tensioner for 10K Boom Winch	2500900373
Cable Tensioners for Dual 10K Boom Winches	1001181891



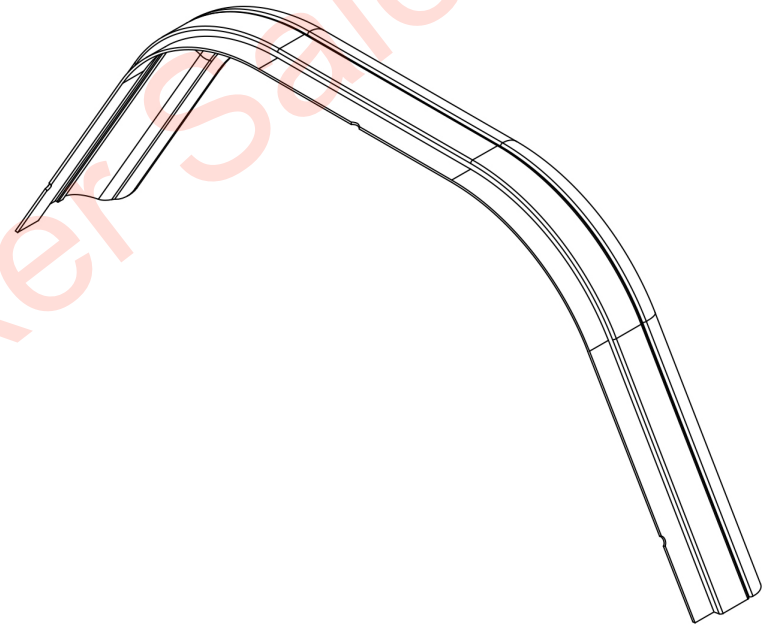
Remote Free Spool Handles	Item
Remote Free Spool Handles(Pair) for Dual 8K Winches	RFSH8K-HPL
Remote Free Spool Handles(Pair) for Dual 10K Winches	RFSH10K-HPL

## Mudflap Options



- Mudflap Brackets with Jerr-Dan Mudflaps
  - Item: 2638000006

## Fender Flare Options



- 2.25" Fiberglass Fender Flairs
  - Item: 2502080078
- 4.25" Fiberglass Fender Flairs
  - Item: 2502080163

## Light Pylon Options



- Toolbox Mounted Aluminum Light Pylon



- Body Mounted Aluminum Light Pylon



## Lighting Options



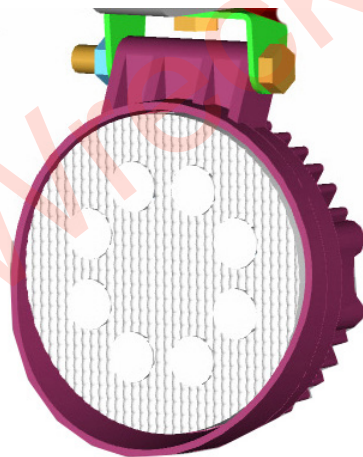
- Code 3 10-Head LED Amber 58" Light Bar
  - Item: 2590000254
- Whelen 10-Head LED Amber 60" Light Bar
  - Item: 1001137520



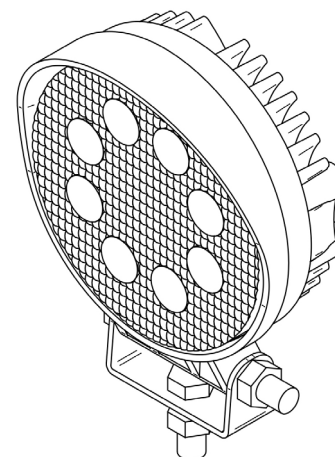
- DOT LED Light
  - Item: 2502330319



- Fold Down Lightbar Bracket
  - Item: 2512570086

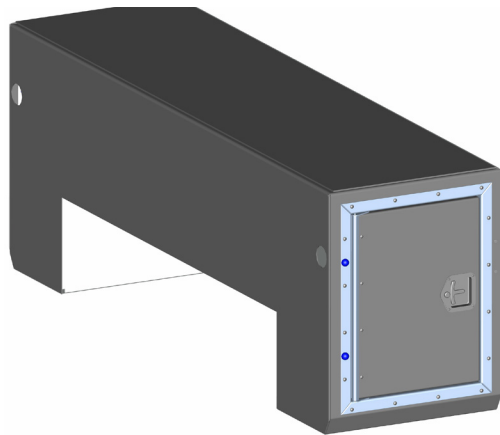


- Lower Hook-up Lights
  - Item: 1001141919



- Upper-Work Lights
  - Item: 2590000126

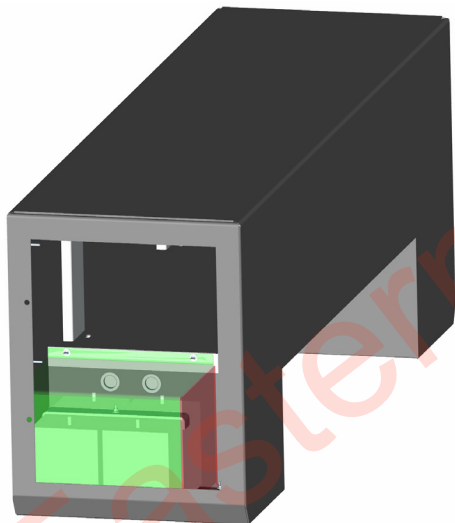
## Tunnel Toolbox Options



- 24" Aluminum Tunnel Toolbox
  - Item: 2899000079
- 24" Aluminum Tunnel Toolbox for Non-Domestic Chassis
  - Item: 2899000019



- Aluminum Stone Guard Kit for Tunnel Toolbox
  - Item: 1001130412

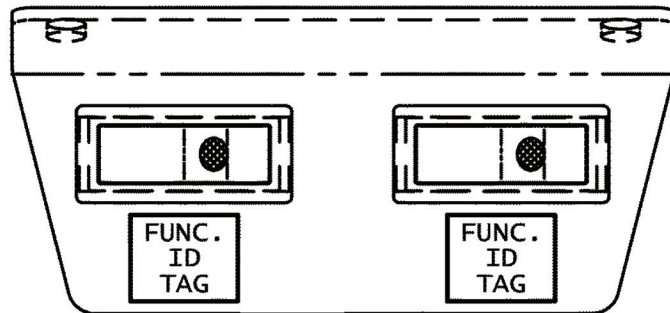


- Battery Cover for Tunnel Toolbox
  - Item: 2314000023

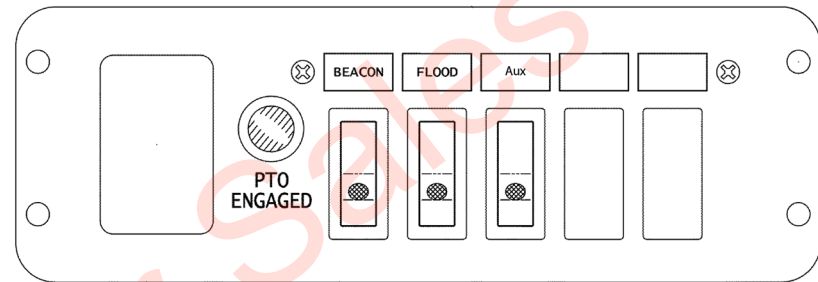
Image Not Available

- Interior Lights for Tunnel Toolbox
  - Item: 2502330280

## Switch Panel Options



- 2 Function Switch Panel
  - Item: 2870000012

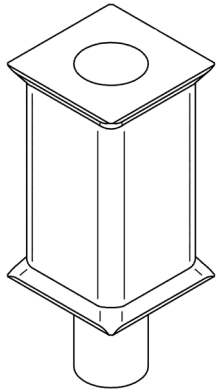


- 3 Function In\_Dash Switch Panel
  - Item: 1001135754

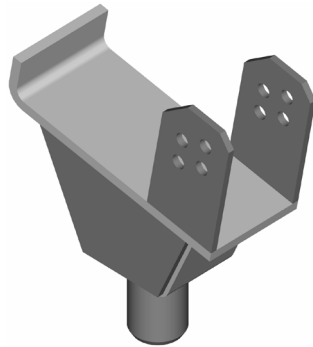
### Switch Panels Not Shown

- 3-Function Under-Dash Compact Switch Panel
- 5-Function In-Dash Compact Switch Panel
- 5-Function Under-Dash Compact Switch Panel
- 4-Function for 2016 & Older Ford OEM Switches
- 5-Function for Dodge OEM Switches

## Tow Options



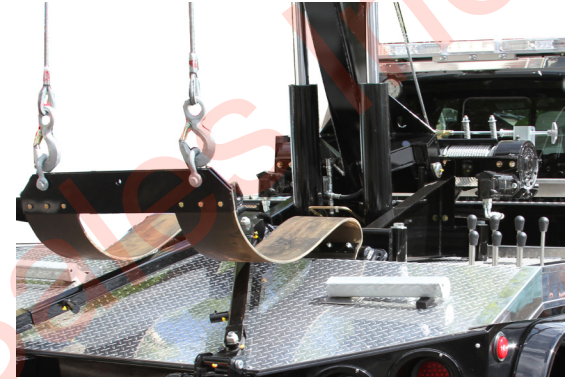
- Fork Risers
  - Item: 7002000502 (QTY 1)



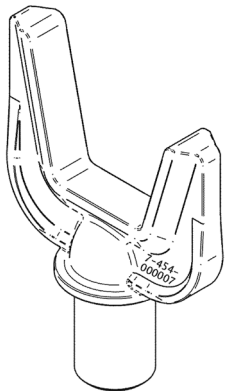
- Spring Hanger Forks
  - Item: SHF



- Rubber Wheel Chocks
  - Item: 7002000448 (Qty 1)



- Tow Sling for Dual Line Boom
  - Item: 2500800646
- Tow Sling for Single Line Boom
  - Item: 2500800647



- Self-Loading Aluminum Dolly w/Storage Brackets
  - Item: 1001131154

### Additional Tow Options

- Medium Duty Truck Hitch
  - Item: 2512800031
- Aluminum Scotch Blocks w/Storage Brackets - Small
  - Item: 2500870068
- Aluminum Scotch Blocks w/Storage Brackets - Large
  - Item: 2500870067

\*Scotch blocks only work with steel body HPL

Description	Item
Cast Low Frame Fork	LFH
Cast High Frame Fork	HFH
Cast Small Frame Fork	7454000007 (Qty 1)
Cast Large Frame Fork	7454000008 (Qty 1)

## Miscellaneous Options/Accessories



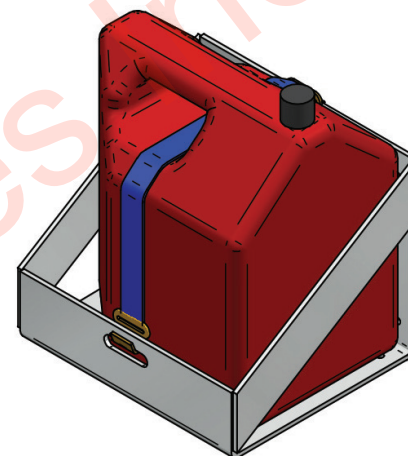
- Fire Extinguisher
  - Item: 2002000028



- Safety Triangle Kit
  - Item: 7002000285



- Magnetic Tow Lights
  - Item: 5525000752



- Fuel Can Holder
  - Item: 1001211866
  - \* Ships Loose

- Suction Mounted Tow Lights w/case
  - Item: 7002000449
- Valve Stem Extension Kit
  - Item: 2002000029

Page Left Blank Intentionally



**JERR-DAN**

An Oshkosh Corporation Company

**TOW**   
**SUPPORT**  
by **JERR-DAN**

13224 Fountainhead Plaza  
Hagerstown, MD 21742

Phone (717) 597-7111  
[www.jerr-dan.com](http://www.jerr-dan.com)