



# Landoll 900 Series TRAVELING TAIL



Easy Transition From The Ground All The Way To The Upper Deck



No Flip Tail Means More Usable Deck Space



No Flip Tail Means You Can Utilize The Whole Deck



15' Ramp Delivers 11° Degree Load Angle



The Undercarriage is Behind the Hinge in Travel Position So You Can Load the Entire Deck

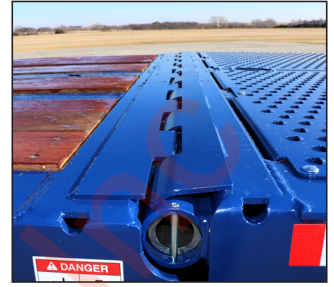
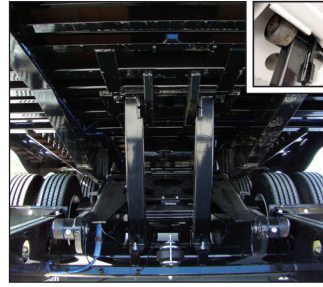


**Proven Solutions for Your Hauling Needs!**  
**1-800-428-5655 | [www.landoll.com/trailers](http://www.landoll.com/trailers)**





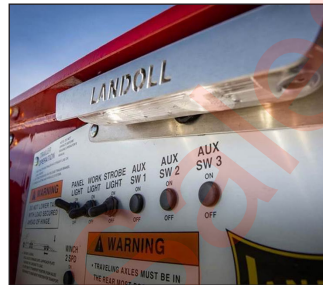
The Tail Can Lift an Impressive 24,000 lbs. To Dock Height 53"



Severe Duty Hinge Pin



Upper Deck Air Ramp Features An 11° Load Angle and Low Clearance



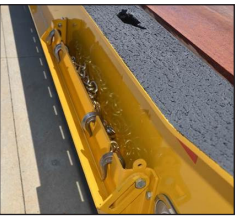
Standard Led Lit Control Panel with Optional Remote



Standard Upper Deck or Side Opening Toolboxes. Both with Stainless Steel Bottom and LED Lights Inside



Lots of Optional Chain Trays and Storage Available



Web Mounted Chain Tray Options



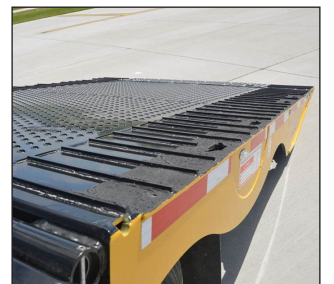
Wheel Options: Crossfire Air Equalizers or Meritor Tire Inflation System; Optional Disc Brakes



Standard Grab Handle And Side Safety Step Options



Safety Guard for Front Ramp



Options Shown: Bolt-On Traction Bars, Tread Plate Over 1" Apitong Deck, No Slip Paint on Outer Flange



Ring Options: Bent D-Ring or Flat D-Ring



Air Weigh Trailer Scale



LED Lit Upper Deck Toolbox



Tie Down Center Keyholes



All Axles Prepped for Tire Inflation



LED Lights



Adjust Tail to Dock Height



Ramp Options: 12', 14', or 15'