

ROUGH TERRAIN FORKLIFTS

Compact, powerful and versatile



03/2024





3,000 lb

C150H

4



4,000, 5,000, 7,000 lb

C201H

C251H

C351H

6



8,000, 11,000 lb

C401H

C501H

10

AUSAnow

12

Technical data

14

Dimensions

16

Equipment

18

① Images throughout the catalog may refer to non-standard machines. Products are subject to modifications without prior notice.



C150H 3,000 lb
TRACTION 4x2 / 4x4 COMPEN®
POWER 24.8 hp WIDTH 51.2 in TRANSMISSION HYDROSTATIC

FEATURED EQUIPMENT

Tilting cab for easy access to the engine and components. **Ergonomic joystick** that controls the movements of the mast and the transmission. **Hydrostatic transmission** to ensure smooth and safe operation for the user. **Spacious driver's cab** for comfortable and safe handling. **Rotating beacon** for increased visibility on the jobsite.

ROUGH TERRAIN FORKLIFT 3,000 lb

AUSAR's most compact rough terrain forklift. With its 3,000 lb payload and extremely small size, it has outstanding handling and versatility.

It is ideal for labor-intensive work in the farming sector and in small-scale municipal works where small loads have to be moved.

The C150H is available with 4x4 and 4x2 drive, so there are options to meet every need.



ROUGH TERRAIN FORKLIFT

4,000 - 5,000 - 7,000 lb

The most advanced range of compact forklifts available on the market. These powerful and robust models are equipped with the latest technology to achieve the best off-road performance with minimal fuel consumption.

They are designed for medium-scale tasks in the construction and agricultural sectors, reaching their full potential on difficult terrains thanks to their sturdiness and high payload.

They also have a digital display in the driver's cab which provides all of the machine's real-time information, allowing you to run self-diagnostics without the need for any external tools.

FEATURED EQUIPMENT

Tilting cab for easy access to the engine and components. **Ergonomic joystick** that controls the movements of the mast and the transmission. **Steering wheel with adjustable** height and reach, for optimum operator comfort and safety. **Digital screen** to access machine information and on board diagnostics. **Limited-slip differential** on the front axle, which transmits the necessary amount of power to each individual wheel. **ECO Mode** to automatically regulate the RPM to ensure low consumption and reduced maintenance costs. **Seat belt with a buckle sensor** and seat with presence sensor to prevent the machine from being used without following the minimum safety procedures. **Negative brake** which is automatically engaged when the engine is turned off.





C201H 4,000 lb
 TRACTION 4x2 / 4x4 FULLGRIP®
 POWER 24.8 hp WIDTH 59.6 in TRANSMISSION HYDROSTATIC



C251H 5,000 lb
 TRACTION 4x2 / 4x4 FULLGRIP®
 POWER 47.1 hp WIDTH 59.8 in TRANSMISSION HYDROSTATIC



C351H 7,000 lb
 TRACTION 4x4 FULLGRIP®
 POWER 47.1 hp WIDTH 70.1 in TRANSMISSION HYDROSTATIC



C401H 8,000 lb
TRACTION 4x4 FULLGRIP®
POWER 74 hp WIDTH 79.1 in TRANSMISSION HYDROSTATIC



C501H 11,000 lb
TRACTION 4x4 FULLGRIP®
POWER 74 hp WIDTH 79.1 in TRANSMISSION HYDROSTATIC

FEATURED EQUIPMENT

Tilting cab for easy access to the engine and components. **Ergonomic joystick** that controls the movements of the mast and the transmission. **Steering wheel with adjustable** height and reach, for optimum operator comfort and safety. **Digital screen** to access machine information and on board diagnostics. **Limited-slip differential** on the front axle, which transmits the necessary amount of power to each individual wheel. **ECO Mode** to automatically regulate the RPM to ensure low consumption and reduced maintenance costs. **Seat belt with a buckle sensor** and **seat with presence sensor** to prevent the machine from being used without following the minimum safety procedures. **Negative brake** which is automatically engaged when the engine is turned off.

ROUGH TERRAIN FORKLIIFT

8,000 - 11,000 lb

The C401H and C501H are AUSA's rough terrain forklifts with the highest payload. Designed for large-scale work, especially in the construction sector and for moving large materials.

Its large payload contrasts with its small size, allowing it to maintain excellent maneuverability on difficult terrains.

They also have a digital display in the driver's cab which provides all of the machine's real-time information, allowing you to run self-diagnostics without the need for any external tools.





All AUSA forklifts can be equipped with AUSAnow, the software used to remotely control machines, providing you with all real-time information.



Control your fleet of machines

From your office or with your mobile phone. Control all of your AUSA machines in real time. With AUSAnow you can anticipate any faults and maintenance, to reduce downtime.



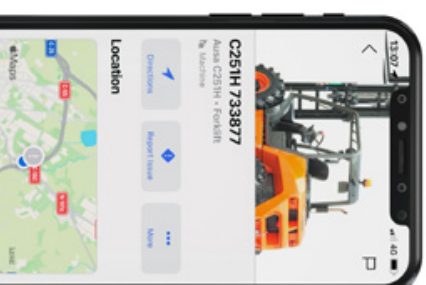
Get information and make decisions

View or create your own personalized charts to obtain in-depth information about the operation of your machines and make decisions that are based on analytical information.



Connect security alarms

Establish a schedule and security perimeter. If one of your machines is moved outside the established area, AUSAnow will alert you straight away so that you can deal with it.



Data, data and more data

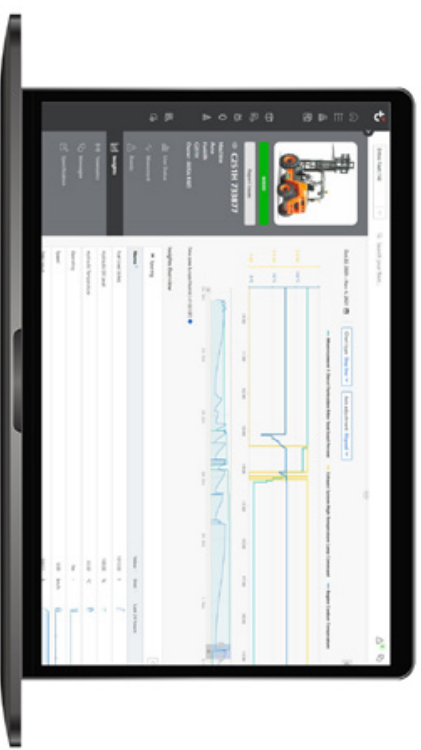
AUSAnow allows you to obtain advanced real-time information about your machine fleet. View advanced charts for customized time periods based on the parameters set by you.



Reduce downtime

AUSAnow connects you to your dealer or rental company, so that any appropriate maintenance can be performed. If you have a problem, AUSAnow provides you with a direct channel of communication with your machine vendor, so that it can be resolved as quickly as possible.

Preventive alerts
Attach images



Alarms for your peace of mind

Activate AUSA's recommended maintenance alerts and keep your machines in tip-top condition. And, for your security, you can program geofences and receive alerts if they go outside the established boundaries.

Customise a schedule
Set a perimeter

TECHNICAL DATA

GENERAL		UNIT	C150H	C150HX4	C20TH	C20THX4
Load capacity to 24"		lb	3,000		4,000	
Unladen weight*		lb	5,950		8,013	
Transmission		-	Hydrostatic			
MAST						
Fork carriage		-	FEM IIB		FEM IIB**	
Carriage width		mm	496		496/65.3	
ENGINE						
Make		-	KUBOTA		KUBOTA	
Model		-	V1505-E48		D1703-M-DI-E4	
Power		hp	24.8		24.8	
Operating speed		rpm	2300		2200	
Torque		lbn	92.6@1700		97.4@1500	
No. cylinders		-	4		3	
Emissions		-	Tier 4		Tier 4	
Noise		dB(A)	103		104	
DRIVING						
Max. speed		mph	12.4		10.5	
Gradability		%	25		25	40
Traction		-	2WD	4WD Compen®	2WD	4WD FullGrip®
Front tires		-	100/75-15.3		100/75-15.3	
Rear tires		-	6.00-9	23x8.5-12	6.00-9	23x8.5-12
HYDRAULIC SYSTEM						
Hydraulic circuit		-	0.64-0.4 cu in. Two gear pump		1.1-0.5 cu in. Two gear pump	
Flow rate		gal/min	5.8		9.7	
Working pressure		psi	2,900		2,683	
TANK CAPACITY						
Fuel		gal	11.9		16.4	
Hydraulic		gal	10.5		13.5	
BRAKES						
Service		-	Sealed Hydraulic drive		Sealed Hydraulic drive	
Parking		-	Mechanical drive		Negative brake and electro-hydraulic release	

* If any change due to optional equipment ** Height measure is different from ISO 2329 standard measure

C25TH	C25THX4	C35THX4	C40THX4	C50THX4
5,000				
9,038	9,380	11,971	15,289	17,130
Hydrostatic				
	FEM IIIB**		FEM IIIB**	FEM IVB**
	49.6/65.3		65.3	65.3
KUBOTA				
	V2403-CR E5B			DEUTZ
	41.8			TD 3.6
	2200			74
	159.8@1600			34.0@1600
	4			4
	Tier 4			Tier 4f
	104			104
12.4				
25	38	35		35
2WD	4WD FullGrip®	4WD FullGrip®		4WD FullGrip®
12.5/80-18		16/70-20		18-19.5
6.00-9	10.0/75-15.3	12-16.5		12-16.5
1.4-0.5 cu in. Two gear pump				
13.2		13.2		15.6
3,04.5		2,900		3,408
16.4				
13.5		13.5		30.1
Sealed Hydraulic drive				
Negative brake and electro-hydraulic release				

DIMENSIONS

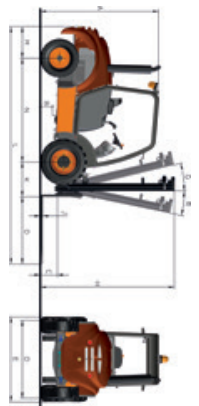
	Maximum lift	C 150 H C 150HX4	C 201 H C 201HX4	C 251 H C 251HX4	C 351 HX4	C 401 HX4	C 501 HX4	C 150 H C 150HX4	C 201 H C 201HX4	C 251 H C 251HX4	C 351 HX4	C 401 HX4	C 501 HX4
DIMENSIONS	(ft)	H - RETRACTED MAST HEIGHT (in)						EXTENDED MAST HEIGHT (in)					
Duplex mast	8.73	80.2	-	-	-	-	-	129.3	-	-	-	-	-
Duplex mast	10.83	-	94.9	96.9	105.1	-	-	164.0	165.9	179.9	-	-	-
Duplex mast	12.14	-	-	-	-	109.0	109.0	-	-	-	-	181.2	181.2
Triplex mast	12.14	-	81.5	83.5	83.9	-	-	181.7	183.7	195.7	-	-	-
Triplex mast	13.12	77.8	-	-	-	-	183.9	-	-	-	-	-	-
Triplex mast	13.94	-	-	-	-	93.2	93.2	-	-	-	-	207.8	207.8
Triplex mast	14.11	-	87.8	90.6	-	-	-	206.7	208.7	-	-	-	-
Triplex mast	17.72	-	102.8	105.7	106.3	-	-	260.6	260.8	262.6	-	-	-
Triplex mast	17.88	-	-	-	-	109.0	109.0	-	-	-	-	255.0	255.0

Standard masts in bold

C 150 H



C150H



C150HX4



C201H

C201HX4

DIMENSIONS (in)												
A	78.7	80.3	82.3	82.3	82.3	82.3	82.3	82.3	82.3	82.3	82.3	82.3
B	8.3	8.3	9.4	8.3	8.3	8.3	8.3	8.3	8.3	8.3	8.3	8.3
C	8.5	8.1	12.2	12.2	12.2	12.2	12.2	12.2	12.2	12.2	12.2	12.2
D	48.3	49.1	56.7	56.7	56.7	56.7	56.7	56.7	56.7	56.7	56.7	56.7
E	51.2	51.2	59.8	59.8	59.8	59.8	59.8	59.8	59.8	59.8	59.8	59.8
E*	51.2	51.2	70.1	70.1	70.1	70.1	70.1	70.1	70.1	70.1	70.1	70.1
F	101.2	157.5	118.9	158.3	158.3	158.3	158.3	158.3	158.3	158.3	158.3	158.3
G	95.3	98.4	109.4	112.2	112.2	112.2	112.2	112.2	112.2	112.2	112.2	112.2
I	3.9	3.9	3.9	3.9	3.9	3.9	3.9	3.9	3.9	3.9	3.9	3.9
J	1.4	1.4	1.6	1.6	1.6	1.6	1.6	1.6	1.6	1.6	1.6	1.6
K	20.1	20.1	25.6	25.6	25.6	25.6	25.6	25.6	25.6	25.6	25.6	25.6
L	142.9	142.9	172.4	172.4	172.4	172.4	172.4	172.4	172.4	172.4	172.4	172.4
M	16.7	15.4	22.8	22.8	22.8	22.8	22.8	22.8	22.8	22.8	22.8	22.8
N	67.3	68.5	76.8	76.8	76.8	76.8	76.8	76.8	76.8	76.8	76.8	76.8
O	39.4	39.4	47.2	47.2	47.2	47.2	47.2	47.2	47.2	47.2	47.2	47.2
P	168.5	224.8	199.6	243.3	243.3	243.3	243.3	243.3	243.3	243.3	243.3	243.3
S	49.6	49.6	49.6	49.6	49.6	49.6	49.6	49.6	49.6	49.6	49.6	49.6
S**	-	-	63.0	63.0	63.0	63.0	63.0	63.0	63.0	63.0	63.0	63.0
DIMENSIONS (ft)												
Q	11	11	11	11	11	11	11	11	11	11	11	11
R	12	12	12	12	12	12	12	12	12	12	12	12

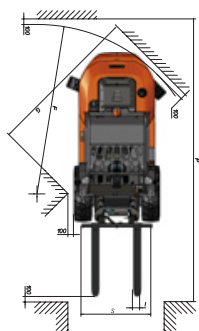
*Measured with high-lift mast installed **Measured for wide aisle coverage

16 | DIMENSIONS

	C 150 H C 150HX4	C 201 H C 201HX4	C 251 H C 251HX4	C 351 HX4	C 401 HX4	C 501 HX4	C 150 H C 150HX4	C 201 H C 201HX4	C 251 H C 251HX4	C 351 HX4	C 401 HX4	C 501 HX4
FREE LIFT (in)	0	4.7	4.7	4.7	-	-	3,000	-	-	-	-	-
LOAD AT MAXIMUM HEIGHT (lb) ROUGH TERRAIN USE	-	-	-	-	3.9	3.9	-	4,000	-	5,000	7,000	-
	-	-	-	-	-	-	-	-	-	-	-	-
	-	44.5	44.5	47.2	-	-	-	4,000	-	3,500	7,000	8,000
	53.5	-	-	-	-	-	2,350	-	-	-	-	-
	-	-	-	-	54.8	54.8	-	-	-	-	-	-
	-	52.4	52.4	-	-	-	-	4,000	-	4,350	-	-
	-	66.1	66.1	66.1	-	-	-	2,545	-	3,000	2,850	-
	-	-	-	-	70.6	70.6	-	-	-	-	-	5,500

Machines with wide aisles for high-lift masts

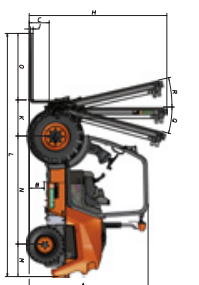
C 201 - 251 - 351 - 501 H



C251H



C251HX4



C401HX4

DIMENSIONS (in)												
84.3	84.6	86.2	92.5	92.5	92.5	92.5	92.5	92.5	92.5	92.5	92.5	92.5
10.6	10.8	11.0	11.0	11.0	11.0	11.0	11.0	11.0	11.0	11.0	11.0	11.0
14.2	13.1	14.8	11.4	11.4	11.4	11.4	11.4	11.4	11.4	11.4	11.4	11.4
54.7	60.9	69.3	69.3	69.3	69.3	69.3	69.3	69.3	69.3	69.3	69.3	69.3
59.8	59.8	70.1	79.1	79.1	79.1	79.1	79.1	79.1	79.1	79.1	79.1	79.1
70.1	70.1	80.7	79.1	79.1	79.1	79.1	79.1	79.1	79.1	79.1	79.1	79.1
118.9	162.2	171.3	173.6	173.6	173.6	173.6	173.6	173.6	173.6	173.6	173.6	173.6
109.4	113.8	121.7	126.4	126.4	126.4	126.4	126.4	126.4	126.4	126.4	126.4	126.4
5.1	5.1	4.7	4.7	4.7	4.7	4.7	4.7	4.7	4.7	4.7	4.7	4.7
1.8	1.8	2.0	2.0	2.0	2.0	2.0	2.0	2.0	2.0	2.0	2.0	2.0
25.6	25.6	28.0	28.3	28.3	28.3	28.3	28.3	28.3	28.3	28.3	28.3	28.3
172.6	172.6	178.7	181.5	181.5	181.5	181.5	181.5	181.5	181.5	181.5	181.5	181.5
23.0	23.0	25.2	25.2	25.2	25.2	25.2	25.2	25.2	25.2	25.2	25.2	25.2
76.8	76.8	79.5	80.7	80.7	80.7	80.7	80.7	80.7	80.7	80.7	80.7	80.7
47.2	47.2	47.2	47.2	47.2	47.2	47.2	47.2	47.2	47.2	47.2	47.2	47.2
200.8	252.0	261.6	253.1	253.1	253.1	253.1	253.1	253.1	253.1	253.1	253.1	253.1
49.6	49.6	51.6	65.4	65.4	65.4	65.4	65.4	65.4	65.4	65.4	65.4	65.4
63.0	63.0	67.3	-	-	-	-	-	-	-	-	-	-
DIMENSIONS (ft)												
11	11	11	11	11	11	11	11	11	11	11	11	11
12	12	12	12	12	12	12	12	12	12	12	12	12

DIMENSIONS | 17

EQUIPMENT

DRIVING POSITION	C150H C150Hx4		C201H C201Hx4		C251H C251Hx4		C351Hx4		C401Hx4		C501Hx4	
Open cab	•	•	•	•	•	•	•	•	•	•	•	•
Semi-closed cab with front, rear and upper windscreens	○	○	○	○	○	○	○	○	○	○	○	○
Closed cab with heating	○	○	○	○	○	○	○	○	○	○	○	○
Closed cab with heating and air conditioning												
Open ROPS cab			○	○	○	○	○	○				
Semi-closed ROPS cab with front, rear and upper windscreens			○	○	○	○	○	○				
Closed ROPS cab with heating			○	○	○	○	○	○				
Closed ROPS cab with heating and air conditioning												
Tilting cab with assisted lift	•	•	•	•	•	•	•	•	•	•	•	•
MASTS												
8.7 ft duplex mast	•											
10.8 ft duplex mast		•	•	•	•	•						
12.1 ft duplex mast							•	•	•	•	•	•
12.1 ft triple mast			○	○	○	○	○	○	○	○	○	○
13.1 ft triple mast		○										
13.9 ft triple mast									○	○	○	○
14.1 ft triple mast with wide shaft			○	○	○	○						
17.7 ft triple mast with wide shaft			○	○	○	○	○	○				
17.9 ft triple mast									○	○	○	○
SAFETY												
Seat belt with fasten sensor				•	•	•	•	•	•	•	•	•
Seat with operator's presence sensor				•	•	•	•	•	•	•	•	•
Rotating beacon					•	•	•	•	•	•	•	•
LED rotating beacon					•	•	•	•	•	•	•	•
Acoustic warning for reverse gear					•	•	•	•	•	•	•	•
Blue Spot light				○	○	○	○	○	○	○	○	○
Emergency stop				○	•	•	•	•	•	•	•	•
Hill Holder - hill-start assist						•	•	•	•	•	•	•
Negative brake						•	•	•	•	•	•	•
Joystick lock										○	○	○
Exhaust spark arrestor		○										
LIGHTING AND DRIVING												
Road lights		○										
Road lights with LED daylight			○	○	○	○	○	○	○	○	○	○
Front and rear LED working lights				○	○	○	○	○	○	○	○	○
Front (2) and rear (1) working lights				○								
Rear-view mirrors		•	•	•	•	•	•	•	•	•	•	•
Fast reverse speed		○										
Maximum speed limited to 9.32 mph					○							
COMFORT												
Adjustable ergonomic seat		•	•	•	•	•	•	•	•	•	•	•
Extra comfort seat, fully adjustable		○	○	○	○	○	○	○	○	○	○	○
Steering wheel with adjustable tilt and reach		•	•	•	•	•	•	•	•	•	•	•
All-in-one joystick		•	•	•	•	•	•	•	•	•	•	•
Armrest		•	•	•	•	•	•	•	•	•	•	•

ADVANCED EQUIPMENT	C150H C150Hx4		C201H C201Hx4		C251H C251Hx4		C351Hx4		C401Hx4		C501Hx4	
Hydrostatic transmission	•	•	•	•	•	•	•	•	•	•	•	•
Second-generation FullCrp® (LWD)					•	•	•	•	•	•	•	•
Limited-slip differential on the front axle				•	•	•	•	•	•	•	•	•
Inching pedal		•	•	•	•	•	•	•	•	•	•	•
ECO Mode system				•	•	•	•	•	•	•	•	•
Digital display					○	○	○	○	○	○	○	○
AUSanow fleet manager		○										
FORKS												
39.4 in forks	•	○	•	•	•	•	•	•	•	•	•	•
47.2 in forks												
96.0 in forks					○							
96.0 in forks (FEM IIA)												
49.6 in FEM II fork carriage				•	•	•						
49.6 in type FEM III fork carriage							•	•	•	•		
65.4 in type FEM IV fork carriage											•	
47.2 in load rest		○										
49.2 in load rest			○	○	○	○	○	○	○	○	○	○
65.3 in load rest												
68.1 in load rest												
Built-in side shifter	•	•	•	•	•	•	•	•	•	•	•	•
IMPLEMENTS												
0.52 cu yd shovel					○							
0.52 cu yd shovel												
0.78 cu yd shovel					○							
1.04 cu yd shovel												
1.30 cu yd shovel												
ACCESSORIES												
4th valve for two-way action control		○	○	○	○	○	○	○	○	○	○	○
Load damper			○	○	○	○	○	○	○	○	○	○
Reverse gear acoustic warning disable switch			○	○	○	○	○	○	○	○	○	○
White noise acoustic warning for reverse gear			○	○	○	○	○	○	○	○	○	○
Fan protective grille				○								
Carradio				○	○	○	○	○	○	○	○	○
Waterproof document holder				○	○	○	○	○	○	○	○	○
Water separator diesel filter				○	○	○	•	•	•	•	•	•
Air filter with cyclone pre-filter				○	○	○	○	○	○	○	○	○
Biodegradable hydraulic oil		○										
TYRES												
520/50R17 front and 31x15.5-15" rear flotation tyres					○							
PARTS												
Spare wheel		○	○	○	○	○	○	○	○	○	○	○
1,000 h maintenance kit												

• Standard ○ Optional

AUSA US CORP
9481 Industrial Center Dr, Unit 3,
Ladson, SC 29456
USA
Tel. (843) 202 0387
ausa.us@ausa.com
www.ausa.com

AUSA Center: +34 93 874 7311 - ausa@ausa.com
AUSA Spain: +34 91 669 00 06 ausa.madrid@ausa.com
AUSA France: +33 (0) 4 68 54 38 97 - ausa.france@ausa.com
AUSA U.K.: +44 (0)7703 60 9009 - ausa.uk@ausa.com
AUSA Central Europe: +49 2384 9415725 - kontakt@ausa.com
AUSA U.S.: +1 (310) 426 2305 - ausa.us@ausa.com
AUSA CHINA: +86 10 8598 7386 - ausa.china@ausa.com

MKCAT.FK.U.S.EN02

Distributor's stamp



www.ausa.com